



[Go to Product page](#)

Datasheet for ABIN518883

anti-PIGH antibody (AA 1-188)

1 Image

Overview

Quantity:	50 µL
Target:	PIGH
Binding Specificity:	AA 1-188
Reactivity:	Human
Host:	Mouse
Clonality:	Polyclonal
Conjugate:	This PIGH antibody is un-conjugated
Application:	Western Blotting (WB)

Product Details

Purpose:	Mouse polyclonal antibody raised against a full-length human PIGH protein.
Immunogen:	PIGH (NP_004560.1, 1 a.a. ~ 188 a.a) full-length human protein.
Sequence:	MEDERSFSDI CGGRLALQRR YYSPSCREFC LSCPRLSLRS LTAVTCTVWL AAYGLFTLCE NSMILSAAIF ITLLGLLGYL HFVKIDQETL LIIDSLGIQM TSSYASGKES TTFIEMGKVK DIVINEAIYM QKVIYYLCIL LKDPVEPHGI SQVVPVFQSA KPRLDCLIEV YRSCQEILAH QKATSTSP
Cross-Reactivity:	Human
Characteristics:	Antibody reactive against mammalian transfected lysate.

Target Details

Target:	PIGH
---------	------

Target Details

Alternative Name:	PIGH (PIGH Products)
Background:	Full Gene Name: phosphatidylinositol glycan anchor biosynthesis, class H Synonyms: GPI-H
Gene ID:	5283
NCBI Accession:	NM_004569

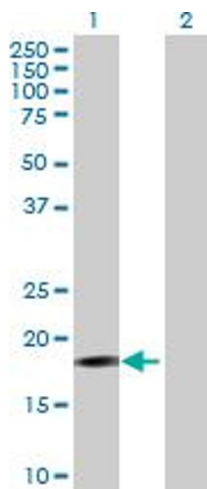
Application Details

Application Notes:	Optimal working dilution should be determined by the investigator.
Restrictions:	For Research Use only

Handling

Format:	Liquid
Buffer:	No additive
Preservative:	Without preservative
Handling Advice:	Aliquot to avoid repeated freezing and thawing.
Storage:	-20 °C
Storage Comment:	Store at -20°C or lower. Aliquot to avoid repeated freezing and thawing.

Images



Western Blotting

Image 1. Western Blot analysis of PIGH expression in transfected 293T cell line by PIGH MaxPab polyclonal antibody.

Lane 1: PIGH transfected lysate(20.68 KDa).

Lane 2: Non-transfected lysate.