

Datasheet for ABIN518891
anti-PIK3CB antibody (AA 147-256)

3 Images

[Go to Product page](#)

Overview

Quantity:	100 µg
Target:	PIK3CB
Binding Specificity:	AA 147-256
Reactivity:	Human
Host:	Mouse
Clonality:	Monoclonal
Conjugate:	This PIK3CB antibody is un-conjugated
Application:	Western Blotting (WB), ELISA, Immunofluorescence (IF), Proximity Ligation Assay (PLA)

Product Details

Purpose:	Mouse monoclonal antibody raised against a partial recombinant PIK3CB.
Immunogen:	PIK3CB (NP_006210, 147 a.a. ~ 256 a.a) partial recombinant protein with GST tag. MW of the GST tag alone is 26 KDa.
Sequence:	EFRRKMRKFS EEKILSLVGL SWMDWLKQTY PPEHEPSIPE NLEDKLYGGK LIVAVHFENC QDVFSFQVSP NMNPIKVNEL AIQKRLTIHG KEDEVSPYDY VLQVSGRVEY
Clone:	10D5
Isotype:	IgG2a
Cross-Reactivity:	Human
Characteristics:	Antibody Reactive Against Recombinant Protein.

Target Details

Target:	PIK3CB
Alternative Name:	PIK3CB (PIK3CB Products)
Background:	Full Gene Name: phosphoinositide-3-kinase, catalytic, beta polypeptide Synonyms: DKFZp779K1237,MGC133043,PI3K,PI3KCB,PI3Kbeta,PIK3C1,p110-BETA
Gene ID:	5291
NCBI Accession:	NM_006219

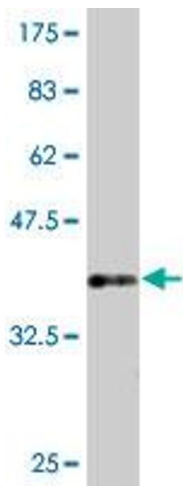
Application Details

Application Notes:	Optimal working dilution should be determined by the investigator.
Restrictions:	For Research Use only

Handling

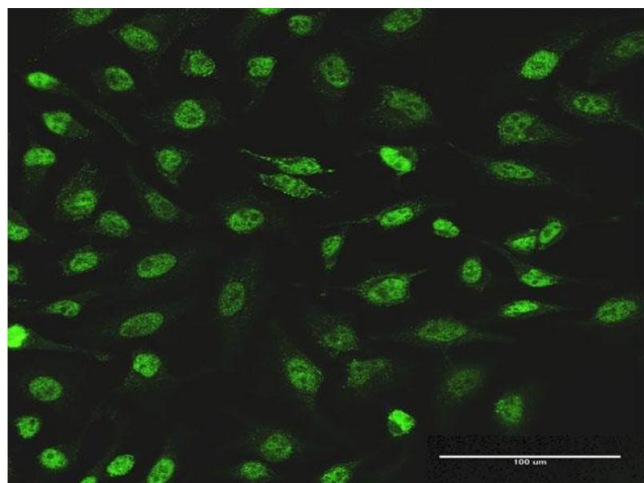
Buffer:	In 1x PBS, pH 7.4
Handling Advice:	Aliquot to avoid repeated freezing and thawing.
Storage:	-20 °C
Storage Comment:	Store at -20°C or lower. Aliquot to avoid repeated freezing and thawing.

Images



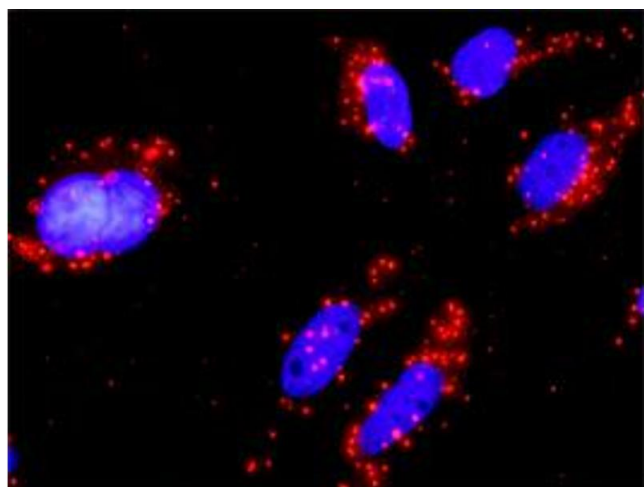
Western Blotting

Image 1. Western Blot detection against Immunogen (37.84 KDa) .



Immunofluorescence

Image 2. Immunofluorescence of monoclonal antibody to PIK3CB on HeLa cell. [antibody concentration 20 ug/ml]



Proximity Ligation Assay

Image 3. Proximity Ligation Analysis of protein-protein interactions between PIK3R1 and PIK3CB. HeLa cells were stained with anti-PIK3R1 rabbit purified polyclonal 1:1200 and anti-PIK3CB mouse monoclonal antibody 1:50. Each red dot represents the detection of protein-protein interaction complex, and nuclei were counterstained with DAPI (blue).