

Datasheet for ABIN518896
anti-PIM1 antibody (AA 1-313)



[Go to Product page](#)

3 Images

Overview

Quantity:	100 µg
Target:	PIM1
Binding Specificity:	AA 1-313
Reactivity:	Human
Host:	Mouse
Clonality:	Monoclonal
Conjugate:	This PIM1 antibody is un-conjugated
Application:	ELISA, Immunohistochemistry (Paraffin-embedded Sections) (IHC (p)), Immunofluorescence (IF)

Product Details

Purpose:	Mouse monoclonal antibody raised against a full length recombinant PIM1.
Immunogen:	PIM1 (AAH20224.1, 1 a.a. ~ 313 a.a) full-length recombinant protein with GST tag. MW of the GST tag alone is 26 KDa.
Sequence:	MLLSKINSLA HLRAAPCNDL HATKLAPGKE KEPLESQYQV GPLLGSGGFG SVYSGIRVSD NLPVAIKHVE KDRISDWGEL PNGTRVPMEV VLLKKVSSGF SGVIRLLDWF ERPDSFVLIL ERPEPVQDLF DFITERGALQ EELARSFFWQ VLEAVRHCHN CGVLHRDIKD ENILIDLNRG ELKLIDFGSG ALLKDTVYTD FDGTRVYSPP EWIRYHRYHG RSAAVWSLGI LLYDMVCGDI PFEHDEEIIIR GQVFFRQRVS SECQHLIRWC LALRPSDRPT FEEIQNHPWM QDVLLPQETA EIHLHSLSPG PSK
Clone:	3F5

Product Details

Isotype:	IgG2a
Cross-Reactivity:	Human
Characteristics:	Antibody Reactive Against Recombinant Protein.

Target Details

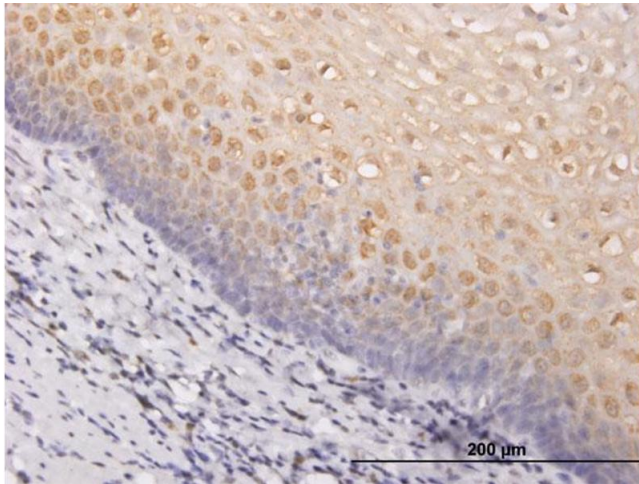
Target:	PIM1
Alternative Name:	PIM1 (PIM1 Products)
Background:	Full Gene Name: pim-1 oncogene Synonyms: PIM
Gene ID:	5292
Pathways:	Glycosaminoglycan Metabolic Process

Application Details

Application Notes:	Optimal working dilution should be determined by the investigator.
Restrictions:	For Research Use only

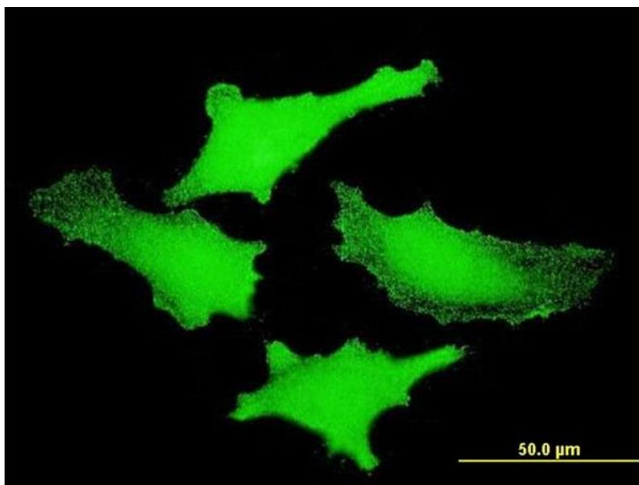
Handling

Buffer:	In 1x PBS, pH 7.4
Handling Advice:	Aliquot to avoid repeated freezing and thawing.
Storage:	-20 °C
Storage Comment:	Store at -20°C or lower. Aliquot to avoid repeated freezing and thawing.



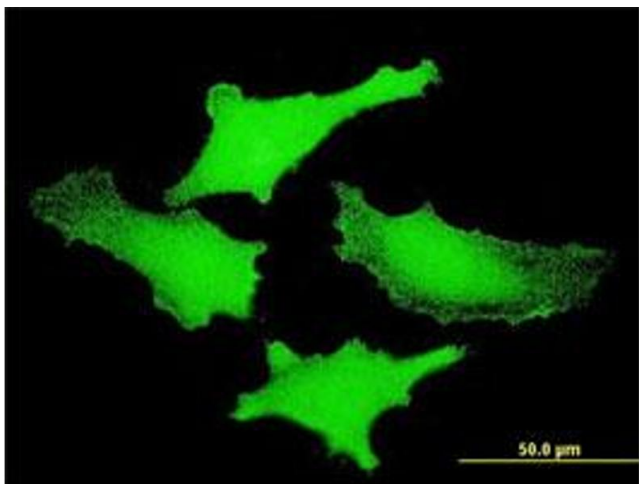
Immunostaining

Image 1. Immunoperoxidase of monoclonal antibody to PIM1 on formalin-fixed paraffin-embedded human esophagus. [antibody concentration 1.5 ug/ml]



Immunofluorescence

Image 2. Immunofluorescence of monoclonal antibody to PIM1 on HeLa cell. [antibody concentration 10 ug/ml]



Immunofluorescence

Image 3. Immunofluorescence of monoclonal antibody to PIM1 on HeLa cell. (antibody concentration 10 μg/mL)