

Datasheet for ABIN518902
anti-PIK3R1 antibody (AA 1-424)[Go to Product page](#)

3 Images

Overview

Quantity:	100 µg
Target:	PIK3R1 (PI3K p85a)
Binding Specificity:	AA 1-424
Reactivity:	Human
Host:	Rabbit
Clonality:	Polyclonal
Conjugate:	This PIK3R1 antibody is un-conjugated
Application:	Western Blotting (WB), Proximity Ligation Assay (PLA)

Product Details

Purpose:	Rabbit polyclonal antibody raised against a full-length human PIK3R1 protein.
Immunogen:	PIK3R1 (ENSP00000323512, 1 a.a. ~ 424 a.a) full-length human protein.
Sequence:	MHNLQTLPPK PPKPTTVANN GMNNNMSLQD AEWYWGDISR EEVNEKL RDT ADGTFLVRDA STKMHG DYTL TLRKGGNNKL IKIFHRDGKY GFSDPLTFSS VVELINHYRN ESLAQYNPKL DVKLLYPVSK YQQDQVVKED NIEAVGKKLH EYNTQFQEK S REYDRLYEEY TRTSQEIQMK RTAIEAFNET IKIFEEQCQT QERY SKEYIE KFKREGNEKE IQRIMHNYDK LKSRISEIID SRRRLEEDLK KQAAEYREID KRMNSIKPDL IQLRKTRDQY LMWLTQKGVR QKKLNEWLGN ENTEDQYSLV EDDEDLPHHD EKTWNVGSSN RNKAENLLRG KRDGTFLVRE SSKQGCYACS VVVDGEVKHC VINKTATGYG FAEPYNLYSS LKELVLHYQH TSLVQHND SL NVTLAYPVYA QQR
Cross-Reactivity:	Human
Characteristics:	Antibody reactive against mammalian transfected lysate.

Target Details

Target:	PIK3R1 (PI3K p85a)
Alternative Name:	PIK3R1 (PI3K p85a Products)
Background:	Full Gene Name: phosphoinositide-3-kinase, regulatory subunit 1 (alpha) Synonyms: GRB1,p85,p85-ALPHA
Gene ID:	5295
NCBI Accession:	NM_181524
Pathways:	TCR Signaling , Response to Growth Hormone Stimulus , Regulation of Muscle Cell Differentiation , Skeletal Muscle Fiber Development , Hepatitis C , Protein targeting to Nucleus , VEGF Signaling , BCR Signaling , Warburg Effect

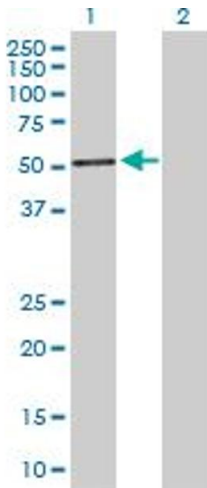
Application Details

Application Notes:	Optimal working dilution should be determined by the investigator.
Restrictions:	For Research Use only

Handling

Buffer:	In 1x PBS, pH 7.4
Handling Advice:	Aliquot to avoid repeated freezing and thawing.
Storage:	-20 °C
Storage Comment:	Store at -20°C or lower. Aliquot to avoid repeated freezing and thawing.

Images

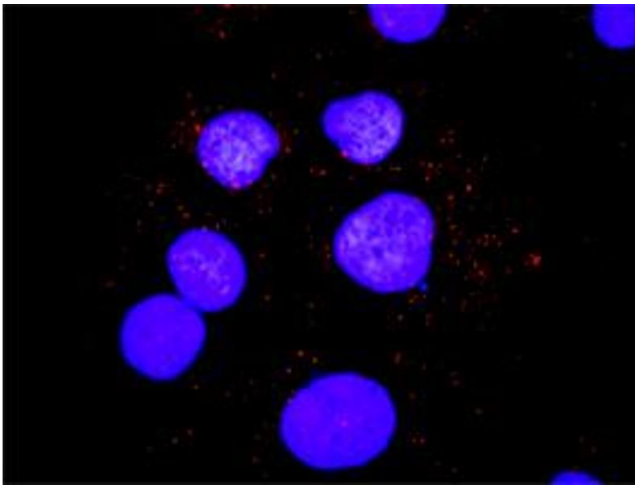


Western Blotting

Image 1. Western Blot analysis of PIK3R1 expression in transfected 293T cell line by PIK3R1 MaxPab polyclonal antibody.

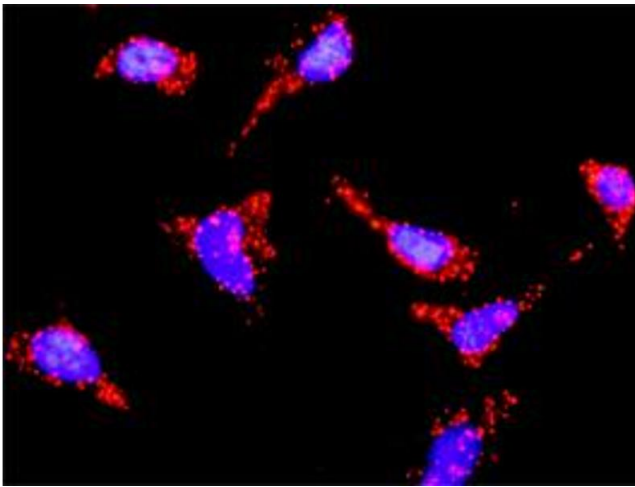
Lane 1: PIK3R1 transfected lysate(50.00 KDa).

Lane 2: Non-transfected lysate.



Proximity Ligation Assay

Image 2. Proximity Ligation Analysis of protein-protein interactions between PIK3R1 and SHC1. Huh7 cells were stained with anti-PIK3R1 rabbit purified polyclonal 1:1200 and anti-SHC1 mouse monoclonal antibody 1:50. Each red dot represents the detection of protein-protein interaction complex, and nuclei were counterstained with DAPI (blue).



Proximity Ligation Assay

Image 3. Proximity Ligation Analysis of protein-protein interactions between PIK3R1 and HRAS. HeLa cells were stained with anti-PIK3R1 rabbit purified polyclonal 1:1200 and anti-HRAS mouse purified polyclonal antibody 1:50. Each red dot represents the detection of protein-protein interaction complex, and nuclei were counterstained with DAPI (blue).