



[Go to Product page](#)

Datasheet for ABIN518913

anti-PITX1 antibody (AA 1-314)

4 Images

1 Publication

Overview

Quantity:	100 µg
Target:	PITX1
Binding Specificity:	AA 1-314
Reactivity:	Human
Host:	Rabbit
Clonality:	Polyclonal
Conjugate:	This PITX1 antibody is un-conjugated
Application:	Western Blotting (WB), Immunofluorescence (IF)

Product Details

Purpose:	Rabbit polyclonal antibody raised against a full-length human PITX1 protein.
Immunogen:	PITX1 (NP_002644.3, 1 a.a. ~ 314 a.a) full-length human protein.
Sequence:	MDAFKGGMSL ERLPEGLRPP PPPPHDMGPA FHLARPADPR EPLENSASES SDTELPEKER GGEPKGPEDS GAGGTGCGGA DDPAKKKKQR RQRTHFTSQQ LQELEATFQR NRYPDMSMRE EIAVWTNLTE PRVRVWFKNR RAKWRKRERN QQLDLCKGGY VPQFSGLVQP YEDVYAAGYS YNNWAAKSLA PAPTSTKSFT FFNSMSPLSS QSMFSAPSSI SSMTMPSSMG PGAVPGMPNS GLNNINNLTG SSLNSAMSPG ACPYGTASP YSVYRDT CNS SLASLRLKSK QHSSFGYGAL QGPASGLNAC QYNS
Cross-Reactivity:	Human, Mouse
Characteristics:	Antibody reactive against mammalian transfected lysate.

Target Details

Target:	PITX1
Alternative Name:	PITX1 (PITX1 Products)
Background:	Full Gene Name: paired-like homeodomain 1 Synonyms: BFT,POTX,PTX1
Gene ID:	5307
NCBI Accession:	NM_002653

Application Details

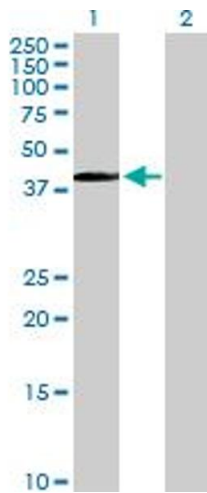
Application Notes:	Optimal working dilution should be determined by the investigator.
Restrictions:	For Research Use only

Handling

Buffer:	In 1x PBS, pH 7.4
Handling Advice:	Aliquot to avoid repeated freezing and thawing.
Storage:	-20 °C
Storage Comment:	Store at -20°C or lower. Aliquot to avoid repeated freezing and thawing.

Publications

Product cited in:	Mullen, Park, Rhodes: "A distal modular enhancer complex acts to control pituitary- and nervous system-specific expression of the LHX3 regulatory gene." in: Molecular endocrinology (Baltimore, Md.) , Vol. 26, Issue 2, pp. 308-19, (2012) (PubMed).
-------------------	---

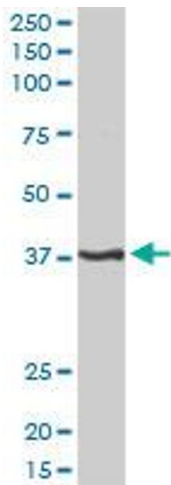


Western Blotting

Image 1. Western Blot analysis of PITX1 expression in transfected 293T cell line by PITX1 MaxPab polyclonal antibody.

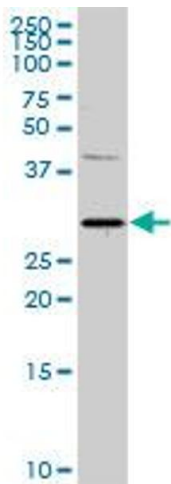
Lane 1: PITX1 transfected lysate(34.10 KDa).

Lane 2: Non-transfected lysate.



Western Blotting

Image 2. PITX1 MaxPab rabbit polyclonal antibody. Western Blot analysis of PITX1 expression in human placenta.



Western Blotting

Image 3. PITX1 MaxPab rabbit polyclonal antibody. Western Blot analysis of PITX1 expression in mouse brain.

Please check the [product details page](#) for more images. Overall 4 images are available for ABIN518913.