

Datasheet for ABIN518916
anti-PITX2 antibody (AA 1-324)



[Go to Product page](#)

2 Images

Overview

Quantity:	100 µg
Target:	PITX2
Binding Specificity:	AA 1-324
Reactivity:	Human
Host:	Mouse
Clonality:	Monoclonal
Conjugate:	This PITX2 antibody is un-conjugated
Application:	Western Blotting (WB), ELISA

Product Details

Purpose:	Mouse monoclonal antibody raised against a full length recombinant PITX2.
Immunogen:	PITX2 (AAH13998, 1 a.a. ~ 324 a.a) full-length recombinant protein with GST tag. MW of the GST tag alone is 26 KDa.
Sequence:	MNCMKGPLHL EHRAAGTKLS AVSSSSCHHP QPLAMASVLA PGQPRSLDSS KHRLEVHTIS DTSSPEAAEK DKSQQGKNED VGAEDPSKKK RQRRQRTHFT SSQLQELEAT FQRNRYPDMS TREEIAVWTN LTEARVRVWF KNRRAKWRKR ERNQQAELCK NGFGPQFNGL MQPYDDMYPG YSYNNWAAKG LTSASLSTKS FPFNSMNVN PLSSQSMFSP PNSISSMSMS SSMVPSAVTG VPGSSLNSLN NLNNLSSPSL NSAVPTPACP YAPPTPPYVY RDTCNSSLAS LRLKAKQHSS FGYASVQNPA SNLSACQYAV DRPV
Clone:	3D2
Isotype:	IgG1

Product Details

Cross-Reactivity:	Human
Characteristics:	Antibody Reactive Against Recombinant Protein.

Target Details

Target:	PITX2
Alternative Name:	PITX2 (PITX2 Products)
Background:	Full Gene Name: paired-like homeodomain 2 Synonyms: ARP1,Brx1,IDG2,IGDS,IGDS2,IHG2,IRID2,MGC111022,MGC20144,Otlx2,PTX2,RGS,RIEG,RIEG1,RS
Gene ID:	5308
Pathways:	Retinoic Acid Receptor Signaling Pathway , Regulation of Muscle Cell Differentiation , Skeletal Muscle Fiber Development

Application Details

Application Notes:	Optimal working dilution should be determined by the investigator.
Restrictions:	For Research Use only

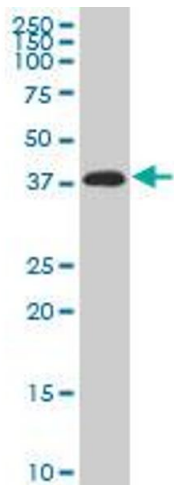
Handling

Buffer:	In 1x PBS, pH 7.4
Handling Advice:	Aliquot to avoid repeated freezing and thawing.
Storage:	-20 °C
Storage Comment:	Store at -20°C or lower. Aliquot to avoid repeated freezing and thawing.



Western Blotting

Image 1. Western Blot detection against Immunogen (61.38 KDa) .



Viral Entry Inhibition

Image 2. PITX2 monoclonal antibody (M02), clone 3D2 Western Blot analysis of PITX2 expression in K-562 (Cat # L009V1).