



Datasheet for ABIN518928
anti-PKM2 antibody (AA 1-531)



[Go to Product page](#)

2 Images

1 Publication

Overview

Quantity:	100 µg
Target:	PKM2
Binding Specificity:	AA 1-531
Reactivity:	Human
Host:	Rabbit
Clonality:	Polyclonal
Conjugate:	This PKM2 antibody is un-conjugated
Application:	Western Blotting (WB), Proximity Ligation Assay (PLA)

Product Details

Purpose:	Rabbit polyclonal antibody raised against a full-length human PKM2 protein.
Immunogen:	PKM2 (NP_002645.3, 1 a.a. ~ 531 a.a) full-length human protein.
Sequence:	MSKPHSEAGT AFIQTQQLHA AMADTFLEHM CRLDIDSPPI TARNTGIICT IGPASRSVET LKEMIKSGMN VARLNFSHGT HEYHAETIKN VRTATESFAS DPILYRPVAV ALDTKGPEIR TGLIKGSGTA EVELKKGATL KITLDNAYME KCDENILWLD YKNICKWVEV GSKIYVDDGL ISLQVKQKGA DFLVTEVENG GSLGSKKGVN LPGAAVDLPA VSEKDIQDLK FGVEQDVDMV FASFIRKASD VHEVRKVLGE KGKNIKIISK IENHEGVRRF DEILEASDGI MVARGDLGIE IPAEEKVFLAQ KMMIGRCNRA GKPVICATQM LESMIKKPRP TRAEGSDVAN AVLDGADCIM LSGETAKGDY PLEAVRMQHL IAREAEAAIY HLQLFEELRR LAPITSDPTE ATAVGAVEAS FKCCSGAIIV LTKSGRSAHQ VARYRPRAPI IAVTRNPQTA RQAHLYRGIF PVLCKDPVQE AWAEDVDLRV NFAMNVGKAR GFFKKGDVVI VLTGWRPGSG FTNTMRVVPV P

Product Details

Cross-Reactivity:	Human
Characteristics:	Antibody reactive against mammalian transfected lysate.

Target Details

Target:	PKM2
Alternative Name:	PKM2 (PKM2 Products)
Background:	Full Gene Name: pyruvate kinase, muscle Synonyms: CTHBP,MGC3932,OIP3,PK3,PKM,TCB,THBP1
Gene ID:	5315
NCBI Accession:	NM_002654
Pathways:	Warburg Effect

Application Details

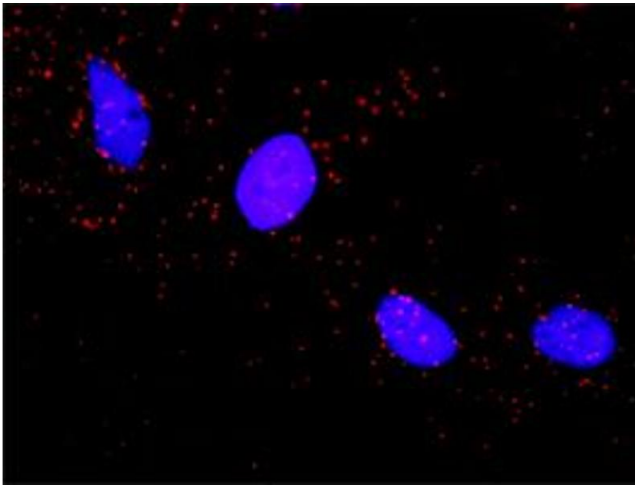
Application Notes:	Optimal working dilution should be determined by the investigator.
Restrictions:	For Research Use only

Handling

Buffer:	In 1x PBS, pH 7.4
Handling Advice:	Aliquot to avoid repeated freezing and thawing.
Storage:	-20 °C
Storage Comment:	Store at -20°C or lower. Aliquot to avoid repeated freezing and thawing.

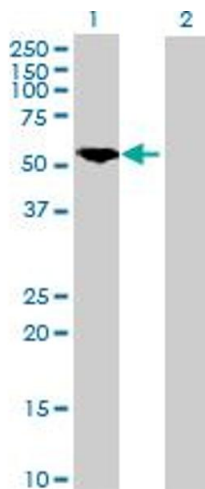
Publications

Product cited in:	Boutz, Collins, Suresh, Lu, Ramírez, Fernández-Hernando, Huang, Abreu, Le, Shapiro, Liu, Luk, Aldred, Trinklein, Marcotte, Penalva: "Two-tiered approach identifies a network of cancer and liver disease-related genes regulated by miR-122." in: The Journal of biological chemistry , Vol. 286, Issue 20, pp. 18066-78, (2011) (PubMed).
-------------------	--



Proximity Ligation Assay

Image 1. Proximity Ligation Analysis of protein-protein interactions between PKM2 and ARAF. HeLa cells were stained with anti-PKM2 rabbit purified polyclonal 1:1200 and anti-ARAF mouse monoclonal antibody 1:50. Each red dot represents the detection of protein-protein interaction complex, and nuclei were counterstained with DAPI (blue).



Western Blotting

Image 2. Western Blot analysis of PKM2 expression in transfected 293T cell line by PKM2 MaxPab polyclonal antibody.

Lane 1: PKM2 transfected lysate(57.90 KDa).

Lane 2: Non-transfected lysate.