



[Go to Product page](#)

Datasheet for ABIN518930

anti-PKM2 antibody (AA 436-531)

2 Images

Overview

Quantity:	100 µg
Target:	PKM2
Binding Specificity:	AA 436-531
Reactivity:	Human
Host:	Mouse
Clonality:	Monoclonal
Conjugate:	This PKM2 antibody is un-conjugated
Application:	ELISA, Immunofluorescence (IF)

Product Details

Purpose:	Mouse monoclonal antibody raised against a partial recombinant PKM2.
Immunogen:	PKM2 (NP_002645, 436 a.a. ~ 531 a.a) partial recombinant protein with GST tag. MW of the GST tag alone is 26 KDa.
Sequence:	RSAHQVARYR PRAPIAVTR NPQTARQ AHL YRGIFVLCK DPVQEAWAED VDLRVNFAMN VGKARGFFKK GDVVIVLTGW RPGSGFTNTM RVVPVP
Clone:	2D8
Isotype:	IgG2a
Cross-Reactivity:	Human
Characteristics:	Antibody Reactive Against Recombinant Protein.

Target Details

Target:	PKM2
Alternative Name:	PKM2 (PKM2 Products)
Background:	Full Gene Name: pyruvate kinase, muscle Synonyms: CTHBP,MGC3932,OIP3,PK3,PKM,TCB,THBP1
Gene ID:	5315
NCBI Accession:	NM_002654
Pathways:	Warburg Effect

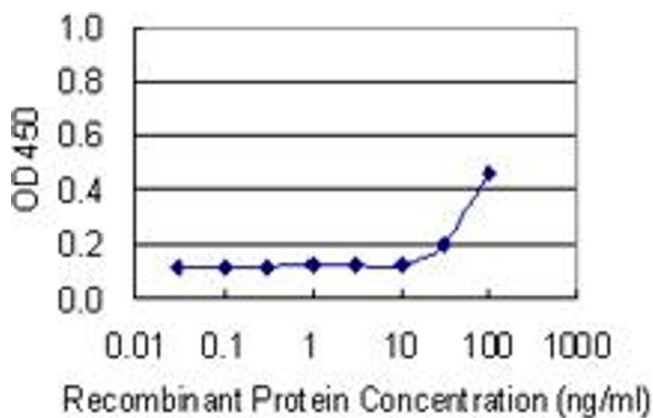
Application Details

Application Notes:	Optimal working dilution should be determined by the investigator.
Restrictions:	For Research Use only

Handling

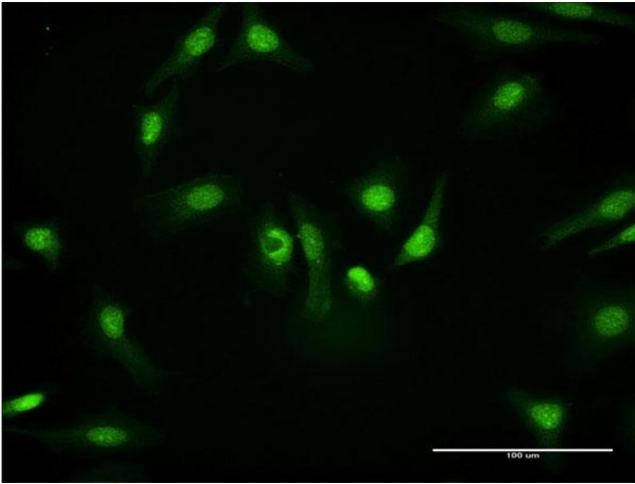
Buffer:	In 1x PBS, pH 7.4
Handling Advice:	Aliquot to avoid repeated freezing and thawing.
Storage:	-20 °C
Storage Comment:	Store at -20°C or lower. Aliquot to avoid repeated freezing and thawing.

Images



ELISA

Image 1. Detection limit for recombinant GST tagged PKM2 is 10 ng/ml as a capture antibody.



Immunofluorescence

Image 2. Immunofluorescence of monoclonal antibody to PKM2 on HeLa cell. [antibody concentration 10 ug/ml]