



[Go to Product page](#)

Datasheet for ABIN518943  
**anti-PLA2G1B antibody (AA 17-70)**

2 Images

Overview

Quantity:	100 µg
Target:	PLA2G1B
Binding Specificity:	AA 17-70
Reactivity:	Human
Host:	Mouse
Clonality:	Monoclonal
Conjugate:	This PLA2G1B antibody is un-conjugated
Application:	Western Blotting (WB), ELISA

Product Details

Purpose:	Mouse monoclonal antibody raised against a full length recombinant PLA2G1B.
Immunogen:	PLA2G1B (AAH05386, 17 a.a. ~ 70 a.a) full-length recombinant protein with GST tag. MW of the GST tag alone is 26 KDa.
Sequence:	SGISPRAVWQ FRKMIKCVIP GSDPFLEYNN YGCYCGLGGS GTPVDELDKQ KQRV
Clone:	2B7
Isotype:	IgG2b
Cross-Reactivity:	Human
Characteristics:	Antibody Reactive Against Recombinant Protein.

## Target Details

Target:	PLA2G1B
Alternative Name:	PLA2G1B ( <a href="#">PLA2G1B Products</a> )
Background:	Full Gene Name: phospholipase A2, group IB (pancreas) Synonyms: MGC119834,MGC119835,PLA2,PLA2A,PPLA2
Gene ID:	5319
Pathways:	<a href="#">Inositol Metabolic Process</a> , <a href="#">VEGF Signaling</a>

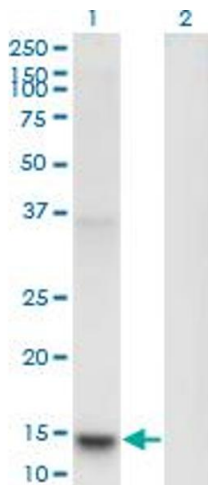
## Application Details

Application Notes:	Optimal working dilution should be determined by the investigator.
Restrictions:	For Research Use only

## Handling

Buffer:	In 1x PBS, pH 7.4
Handling Advice:	Aliquot to avoid repeated freezing and thawing.
Storage:	-20 °C
Storage Comment:	Store at -20°C or lower. Aliquot to avoid repeated freezing and thawing.

## Images

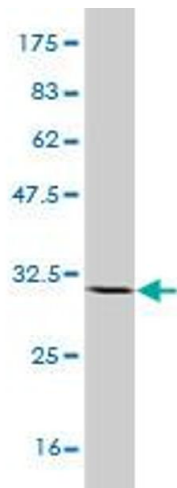


### Western Blotting

**Image 1.** Western Blot analysis of PLA2G1B expression in transfected 293T cell line by PLA2G1B monoclonal antibody (M14), clone 2B7.

Lane 1: PLA2G1B transfected lysate (Predicted MW: 16.4 kDa).

Lane 2: Non-transfected lysate.



### Western Blotting

**Image 2.** Western Blot detection against Immunogen (31.68 KDa).