



[Go to Product page](#)

Datasheet for ABIN518944  
**anti-PLAG1 antibody (AA 2-99)**

3 Images

Overview

Quantity:	100 µg
Target:	PLAG1
Binding Specificity:	AA 2-99
Reactivity:	Human
Host:	Mouse
Clonality:	Monoclonal
Conjugate:	This PLAG1 antibody is un-conjugated
Application:	Western Blotting (WB), ELISA, Immunofluorescence (IF)

Product Details

Purpose:	Mouse monoclonal antibody raised against a partial recombinant PLAG1.
Immunogen:	PLAG1 (NP_002646, 2 a.a. ~ 99 a.a) partial recombinant protein with GST tag. MW of the GST tag alone is 26 KDa.
Sequence:	ATVIPGDLSE VRDTQKVPSG KRKRGETKPR KNFPCQLCDK AFNSVEKLVK HSYSTGERP YKCIQQDCTK AFVSKYKLR HMATHSPEKT HKCNYCEK
Clone:	1F11
Isotype:	IgG1
Cross-Reactivity:	Human
Characteristics:	Antibody Reactive Against Recombinant Protein.

## Target Details

Target:	PLAG1
Alternative Name:	PLAG1 ( <a href="#">PLAG1 Products</a> )
Background:	Full Gene Name: pleiomorphic adenoma gene 1 Synonyms: PSA,SGPA
Gene ID:	5324
NCBI Accession:	<a href="#">NM_002655</a>

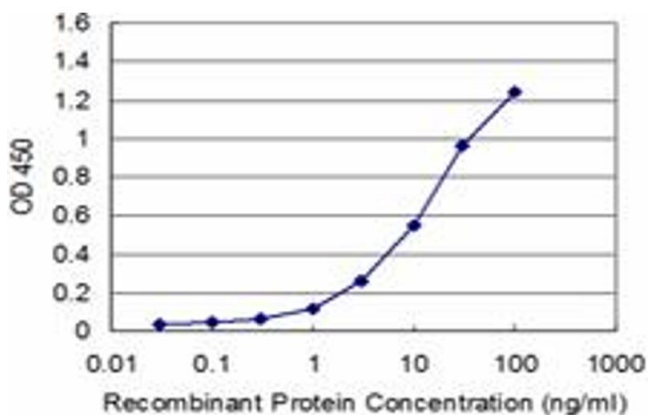
## Application Details

Application Notes:	Optimal working dilution should be determined by the investigator.
Restrictions:	For Research Use only

## Handling

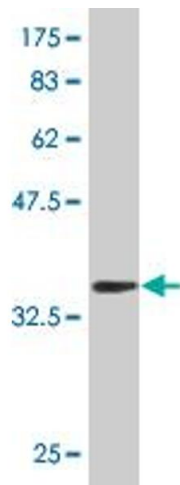
Buffer:	In 1x PBS, pH 7.4
Handling Advice:	Aliquot to avoid repeated freezing and thawing.
Storage:	-20 °C
Storage Comment:	Store at -20°C or lower. Aliquot to avoid repeated freezing and thawing.

## Images



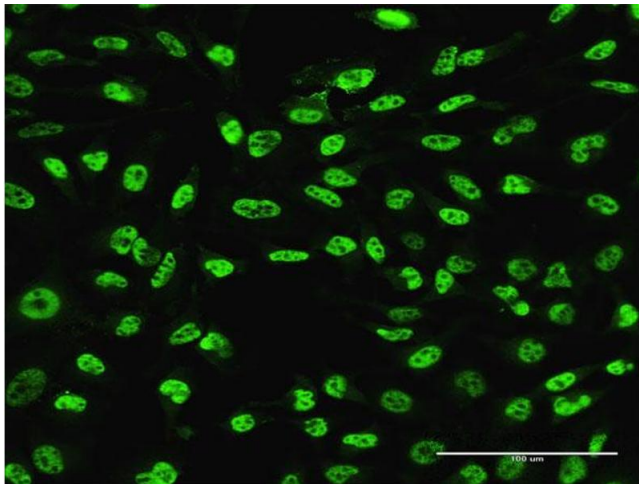
### ELISA

**Image 1.** Detection limit for recombinant GST tagged PLAG1 is approximately 1ng/ml as a capture antibody.



### Western Blotting

**Image 2.** Western Blot detection against Immunogen (36.52 KDa).



### Immunofluorescence

**Image 3.** Immunofluorescence of monoclonal antibody to PLAG1 on HeLa cell. [antibody concentration 5 ug/ml]