



[Go to Product page](#)

Datasheet for ABIN518952

anti-PLD1 antibody (AA 965-1074)

1 Image

1 Publication

Overview

Quantity:	100 µg
Target:	PLD1
Binding Specificity:	AA 965-1074
Reactivity:	Human
Host:	Mouse
Clonality:	Monoclonal
Conjugate:	This PLD1 antibody is un-conjugated
Application:	ELISA, Western Blotting (WB)

Product Details

Purpose:	Mouse monoclonal antibody raised against a partial recombinant PLD1.
Immunogen:	PLD1 (NP_002653, 965 a.a. ~ 1074 a.a) partial recombinant protein with GST tag. MW of the GST tag alone is 26 KDa.
Sequence:	GYLDDPSEDI QDPVSDKFFK EVVWSTAARN ATIYDKVFRC LPNDEVHNL IQLRDFINKPV LAKEDPIRAE EELKKIRGFL VQFPFYFLSE ESSLPSVGTK EAIVPMEVWT
Clone:	10H2
Isotype:	IgG1
Cross-Reactivity:	Human
Characteristics:	Antibody Reactive Against Recombinant Protein.

Target Details

Target:	PLD1
Alternative Name:	PLD1 (PLD1 Products)
Background:	Full Gene Name: phospholipase D1, phosphatidylcholine-specific Synonyms:
Gene ID:	5337
NCBI Accession:	NM_002662

Application Details

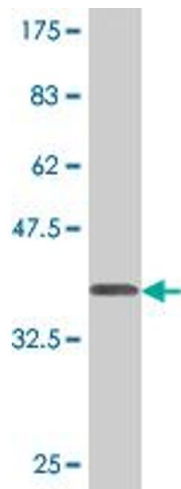
Application Notes:	Optimal working dilution should be determined by the investigator.
Restrictions:	For Research Use only

Handling

Buffer:	In 1x PBS, pH 7.4
Handling Advice:	Aliquot to avoid repeated freezing and thawing.
Storage:	-20 °C
Storage Comment:	Store at -20°C or lower. Aliquot to avoid repeated freezing and thawing.

Publications

Product cited in:	De Larichaudy, Zufferli, Serra, Isidori, Naro, Dessalle, Desgeorges, Piraud, Cheillan, Vidal, Lefai, Némoz: "TNF-? and tumor-induced skeletal muscle atrophy involves sphingolipid metabolism." in: Skeletal muscle , Vol. 2, Issue 1, pp. 2, (2012) (PubMed).
-------------------	---



Western Blotting

Image 1. Western Blot detection against Immunogen (37.84 kDa) .