



[Go to Product page](#)

Datasheet for ABIN518965  
**anti-PLIN1 antibody (AA 101-208)**

2 Images

Overview

Quantity:	100 µg
Target:	PLIN1
Binding Specificity:	AA 101-208
Reactivity:	Human
Host:	Mouse
Clonality:	Monoclonal
Conjugate:	This PLIN1 antibody is un-conjugated
Application:	Western Blotting (WB), ELISA

Product Details

Purpose:	Mouse monoclonal antibody raised against a partial recombinant PLIN.
Immunogen:	PLIN (NP_002657.2, 101 a.a. ~ 208 a.a) partial recombinant protein with GST tag. MW of the GST tag alone is 26 KDa.
Sequence:	KIPALQYPPE KIASLKDITL STRLRSARNISVPIASTSD KVLGAALAGC ELAWGVARDT AEFAANTRAG RLASGGADLA LGSIEKVVEY LLPADKEESA PAPGHQQA
Clone:	4G1
Isotype:	IgG2a
Cross-Reactivity:	Human
Characteristics:	Antibody Reactive Against Recombinant Protein.

## Target Details

Target:	PLIN1
Alternative Name:	PLIN ( <a href="#">PLIN1 Products</a> )
Background:	Full Gene Name: perilipin Synonyms: PERI
Gene ID:	5346
NCBI Accession:	<a href="#">NM_002666</a>
Pathways:	<a href="#">Lipid Metabolism</a>

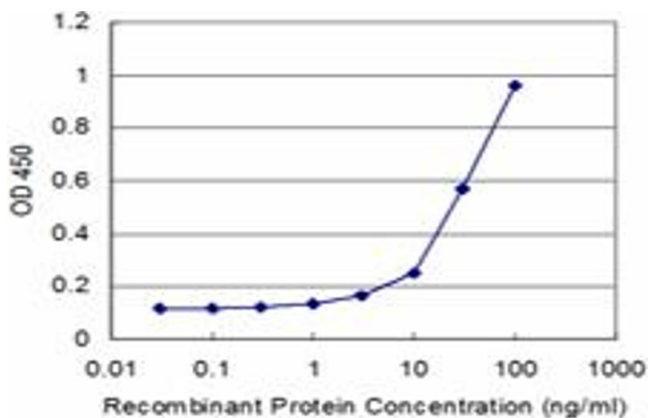
## Application Details

Application Notes:	Optimal working dilution should be determined by the investigator.
Restrictions:	For Research Use only

## Handling

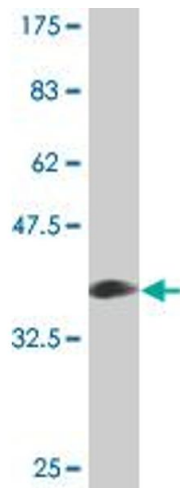
Buffer:	In 1x PBS, pH 7.4
Handling Advice:	Aliquot to avoid repeated freezing and thawing.
Storage:	-20 °C
Storage Comment:	Store at -20°C or lower. Aliquot to avoid repeated freezing and thawing.

## Images



### ELISA

**Image 1.** Detection limit for recombinant GST tagged PLIN is approximately 3ng/ml as a capture antibody.



### Western Blotting

**Image 2.** Western Blot detection against Immunogen (37.62 kDa).