

Datasheet for ABIN518968
anti-PLK1 antibody (AA 1-603)



[Go to Product page](#)

3 Images

Overview

Quantity:	100 µg
Target:	PLK1
Binding Specificity:	AA 1-603
Reactivity:	Human
Host:	Rabbit
Clonality:	Polyclonal
Conjugate:	This PLK1 antibody is un-conjugated
Application:	Western Blotting (WB), Proximity Ligation Assay (PLA)

Product Details

Purpose:	Rabbit polyclonal antibody raised against a full-length human PLK1 protein.
Immunogen:	PLK1 (NP_005021.2, 1 a.a. ~ 603 a.a) full-length human protein.
Sequence:	MSAAVTAGKL ARAPADPGKA GVPGVAAPGA PAAAPPAKEI PEVLVDPRSR RRYVVRGRFLG KGGFAKCFEI SDADTKEVFA GKIVPKSLLL KPHQREKMSM EISIHRS LAH QHVVG F HGFF EDNDFV FVVL ELCRRRSLLE LHKRRKALTE PEARYYLRQI VLGCQYLHRN RVIHRDLKLG NLFLNEDLEV KIGDFGLATK VEYDGERKKT LCGTPNYIAP EVLSKKGHSF EVDVWSIGCI MYTLLVGKPP FETSCLKETY LRIKKNEYSI PKHINPVAAS LIQKMLQTDP TARPTINELL NDEFFTSGYI PARLPITCLT IPPRFSIAPS SLDPSNRKPL TVLNKGLENP LPERPREKEE PVVRETGEV DCHLSDMLQQ LHSVNASKPS ERGLVRQEEA EDPACIPIFW VSKWVDYSDK YGLGYQLCDN SVGVLFNDST RLILYNDGDS LQYIERDGTE SYLTVSSHPN SLMKKITLLK YFRNYMSEHL LKAGANITPR EGDELARLPY LRTWFRTRSA IILHLSNGSV QINFFQDHTK LILCPLMAAV TYIDEKRDFR TYRLSLLEEY GCCKELASRL RYARTMVDKL LSSRSASNRL KAS

Product Details

Cross-Reactivity:	Human, Mouse
Characteristics:	Antibody reactive against mammalian transfected lysate.

Target Details

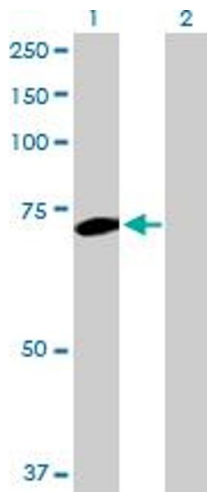
Target:	PLK1
Alternative Name:	PLK1 (PLK1 Products)
Background:	Full Gene Name: polo-like kinase 1 (Drosophila) Synonyms: PLK,STPK13
Gene ID:	5347
NCBI Accession:	NM_005030
Pathways:	Cell Division Cycle, M Phase

Application Details

Application Notes:	Optimal working dilution should be determined by the investigator.
Restrictions:	For Research Use only

Handling

Buffer:	In 1x PBS, pH 7.4
Handling Advice:	Aliquot to avoid repeated freezing and thawing.
Storage:	-20 °C
Storage Comment:	Store at -20°C or lower. Aliquot to avoid repeated freezing and thawing.

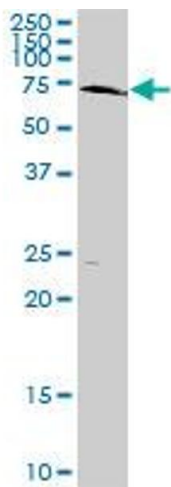


Western Blotting

Image 1. Western Blot analysis of PLK1 expression in transfected 293T cell line by PLK1 MaxPab polyclonal antibody.

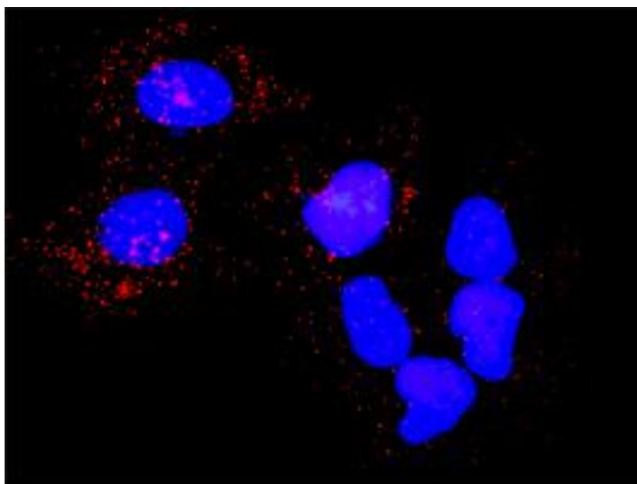
Lane 1: PLK1 transfected lysate(68.30 KDa).

Lane 2: Non-transfected lysate.



Western Blotting

Image 2. PLK1 MaxPab rabbit polyclonal antibody. Western Blot analysis of PLK1 expression in mouse spleen.



Proximity Ligation Assay

Image 3. Proximity Ligation Analysis of protein-protein interactions between PLK1 and PKMYT1. Huh7 cells were stained with anti-PLK1 rabbit purified polyclonal 1:1200 and anti-PKMYT1 mouse monoclonal antibody 1:50. Each red dot represents the detection of protein-protein interaction complex, and nuclei were counterstained with DAPI (blue).