

Datasheet for ABIN518987
anti-PMCH antibody (AA 1-165)



[Go to Product page](#)

2 Images

Overview

Quantity:	100 µg
Target:	PMCH
Binding Specificity:	AA 1-165
Reactivity:	Human
Host:	Mouse
Clonality:	Monoclonal
Conjugate:	This PMCH antibody is un-conjugated
Application:	Western Blotting (WB), ELISA

Product Details

Purpose:	Mouse monoclonal antibody raised against a full-length recombinant PMCH.
Immunogen:	PMCH (AAH18048, 1 a.a. ~ 165 a.a) full-length recombinant protein with GST tag. MW of the GST tag alone is 26 KDa.
Sequence:	MAKMNLSYI LILTFSLFSQ GILLSASKSI RNLDDDMVFN TFRLGKGFQK EDTAEKSVIA PSLEQYKNDE SSFMNEEENK VSKNTGSKHN FLNHGLPLNL AIKPYLALKG SVAFPAENGV QNTESTQEKR EIGDEENSAK FPIGRRDFDM LRCMLGRVYR PCWQV
Clone:	1D1
Isotype:	IgG2a
Cross-Reactivity:	Human
Characteristics:	Antibody Reactive Against Recombinant Protein.

Target Details

Target:	PMCH
Alternative Name:	PMCH (PMCH Products)
Background:	Full Gene Name: pro-melanin-concentrating hormone Synonyms: MCH
Gene ID:	5367
Pathways:	Carbohydrate Homeostasis , Feeding Behaviour

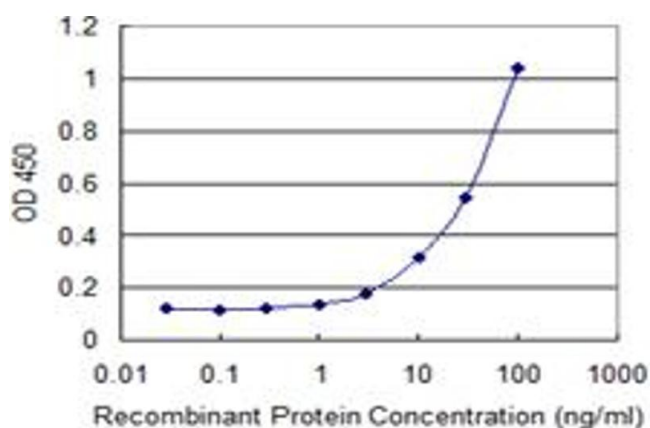
Application Details

Application Notes:	Optimal working dilution should be determined by the investigator.
Restrictions:	For Research Use only

Handling

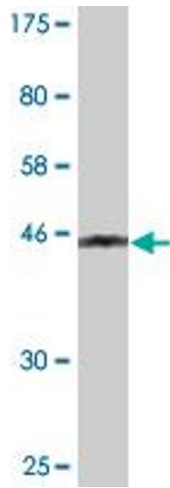
Buffer:	In 1x PBS, pH 7.4
Handling Advice:	Aliquot to avoid repeated freezing and thawing.
Storage:	-20 °C
Storage Comment:	Store at -20°C or lower. Aliquot to avoid repeated freezing and thawing.

Images



ELISA

Image 1. Detection limit for recombinant GST tagged PMCH is 1 ng/ml as a capture antibody.



Western Blotting

Image 2. Western Blot detection against Immunogen (43.89 kDa).