

Datasheet for ABIN518988  
**anti-PML antibody (AA 411-510)**

## 3 Images

[Go to Product page](#)

## Overview

Quantity:	100 µg
Target:	PML
Binding Specificity:	AA 411-510
Reactivity:	Human
Host:	Mouse
Clonality:	Monoclonal
Conjugate:	This PML antibody is un-conjugated
Application:	Western Blotting (WB), Immunofluorescence (IF), ELISA

## Product Details

Purpose:	Mouse monoclonal antibody raised against a partial recombinant PML.
Immunogen:	PML (AAH00080, 411 a.a. ~ 510 a.a) partial recombinant protein with GST tag. MW of the GST tag alone is 26 KDa.
Sequence:	RDPIDVDLDV SNTTTAQKRK CSQTQCPRKV IKMESEEGKE ARLARSSPEQ PRPSTSKAVS PPHLDGPPSP RSPVIGSEVF LPNSNHVASG AGEAEERVVV
Clone:	2B10
Isotype:	IgG1
Cross-Reactivity:	Human
Characteristics:	Antibody Reactive Against Recombinant Protein.

Target Details

Target:	PML
Alternative Name:	PML ( <a href="#">PML Products</a> )
Background:	Full Gene Name: promyelocytic leukemia Synonyms: MYL,PP8675,RNF71,TRIM19
Gene ID:	5371
Pathways:	<a href="#">p53 Signaling</a> , <a href="#">Retinoic Acid Receptor Signaling Pathway</a> , <a href="#">Maintenance of Protein Location</a> , <a href="#">Positive Regulation of Endopeptidase Activity</a> , <a href="#">Protein targeting to Nucleus</a>

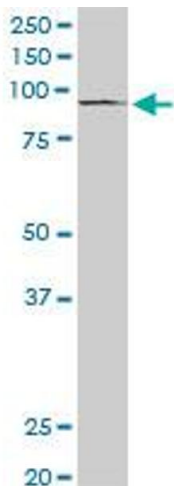
Application Details

Application Notes:	Optimal working dilution should be determined by the investigator.
Restrictions:	For Research Use only

Handling

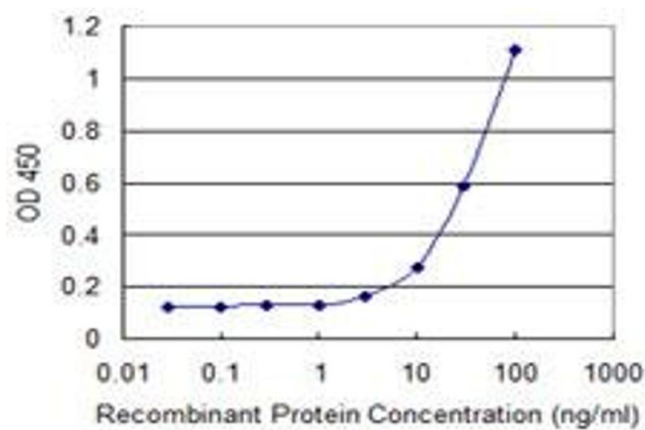
Buffer:	In 1x PBS, pH 7.4
Handling Advice:	Aliquot to avoid repeated freezing and thawing.
Storage:	-20 °C
Storage Comment:	Store at -20°C or lower. Aliquot to avoid repeated freezing and thawing.

Images



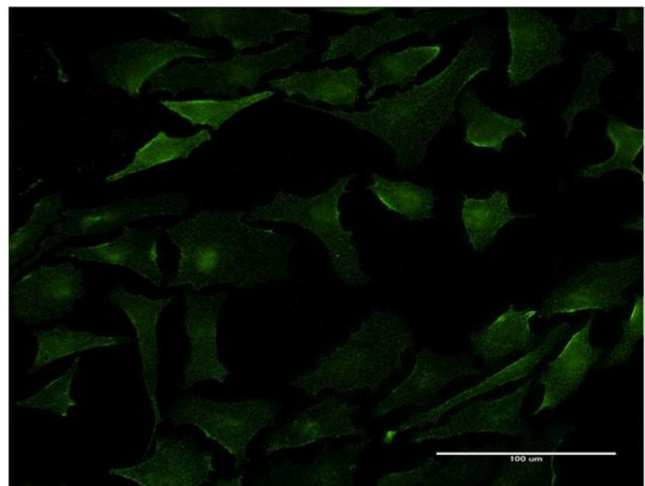
Western Blotting

**Image 1.** PML monoclonal antibody (M04), clone 2B10. Western Blot analysis of PML expression in HepG2.



ELISA

**Image 2.** Detection limit for recombinant GST tagged PML is 1 ng/ml as a capture antibody.



Immunofluorescence

**Image 3.** Immunofluorescence of monoclonal antibody to PML on HeLa cell. [antibody concentration 10 ug/ml]