



[Go to Product page](#)

Datasheet for ABIN519022
anti-POLE antibody (AA 1-370)

2 Images

Overview

Quantity:	50 µL
Target:	POLE
Binding Specificity:	AA 1-370
Reactivity:	Human
Host:	Mouse
Clonality:	Polyclonal
Conjugate:	This POLE antibody is un-conjugated
Application:	Immunofluorescence (IF), Western Blotting (WB)

Product Details

Purpose:	Mouse polyclonal antibody raised against a full-length human POLE protein.
Immunogen:	POLE (AAH21559, 1 a.a. ~ 370 a.a) full-length human protein.
Sequence:	MDPSNYGGIK GKVSSRIHCG LQDSQKAGGA EDEQENEDDE EERDGEEEE AEESNVEDLL ENNWNILQFL PQAASCQNYF LMIVSAYIVA VYHCMKDGLR RSAPGSTPVR RRGASQLSQE AEGAVGALPG MITFSQDYVA NELTQSFFTI TQKIQKKVTG SRNSTELSEM FVPLPGSHLL LNNPALEFIK YVCKVLSLDT NITNQVNKLN RDLLRLVDVG EFSEEAQFRD PCRSYVLPEV ICRSCNFCRD LDLCKDSSFS EDGAVLPQWL CSNCQAPYDS SAIEMTLVEV LQKKLVAFTL QDLVCLKCRG VKETSMPVYC SCAGDFALTI HTQVFMEQIG IFRNIAQHYG MSYLLETLEW LLQKNPQLGH
Cross-Reactivity:	Human
Characteristics:	Antibody reactive against mammalian transfected lysate.

Target Details

Target:	POLE
Alternative Name:	POLE (POLE Products)
Background:	Full Gene Name: polymerase (DNA directed), epsilon Synonyms: DKFZp434F222,FLJ21434,POLE1
Gene ID:	5426
Pathways:	Telomere Maintenance , DNA Damage Repair , Mitotic G1-G1/S Phases , DNA Replication , Synthesis of DNA

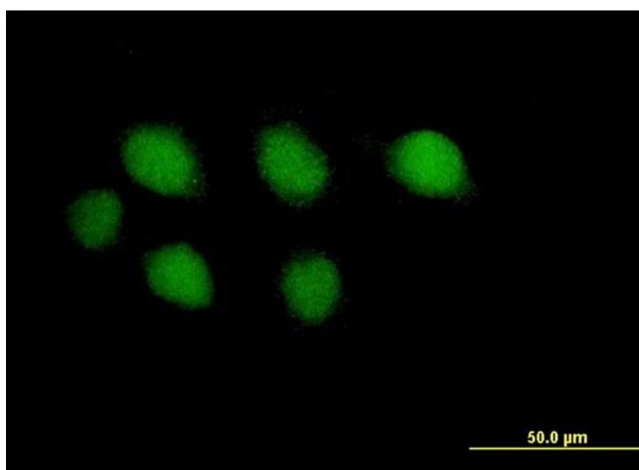
Application Details

Application Notes:	Optimal working dilution should be determined by the investigator.
Restrictions:	For Research Use only

Handling

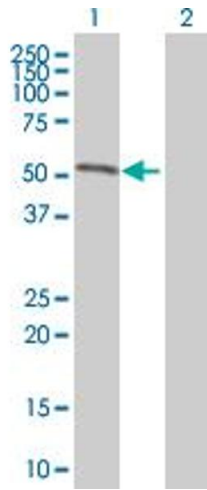
Format:	Liquid
Buffer:	No additive
Preservative:	Without preservative
Handling Advice:	Aliquot to avoid repeated freezing and thawing.
Storage:	-20 °C
Storage Comment:	Store at -20°C or lower. Aliquot to avoid repeated freezing and thawing.

Images



Immunofluorescence

Image 1. Immunofluorescence of purified MaxPab antibody to POLE on HeLa cell. [antibody concentration 10 ug/ml]



Western Blotting

Image 2. Western Blot analysis of POLE expression in transfected 293T cell line by POLE MaxPab polyclonal antibody.

Lane 1: POLE transfected lysate(40.81 KDa).

Lane 2: Non-transfected lysate.