



Datasheet for ABIN519081
anti-PPID antibody (AA 1-370)



[Go to Product page](#)

2 Images

Overview

Quantity:	100 µL
Target:	PPID
Binding Specificity:	AA 1-370
Reactivity:	Human
Host:	Rabbit
Clonality:	Polyclonal
Conjugate:	This PPID antibody is un-conjugated
Application:	Western Blotting (WB), Immunoprecipitation (IP)

Product Details

Purpose:	Rabbit polyclonal antibody raised against a full-length human PPID protein.
Immunogen:	PPID (NP_005029.1, 1 a.a. ~ 370 a.a) full-length human protein.
Sequence:	MSHPSPQAKP SNPSNPRVFF DVDIGGERVG RIVLELFADI VPKTAENFRA LCTGEKGIGH TTGKPLHFKG CPFHRIKKF MIQGGDFSNQ NGTGGESIYG EKFEDEFNHY KHDREGLLSM ANAGRNTNGS QFFITTVPTP HLDGKHVVFG QVIKGIGVAR ILENVEVKGE KPAKLCVIAE CGELKEGDDG GIFPKDGS GD SHPDFPEDAD IDLKDVDKIL LITEDLNIG NTFFKSQNWE MAIKKYAEVL RYVDSSKAVI ETADRAKLQP IALSCVLNIG ACKLKMSNWQ GAIDSCLEAL ELDPSNTKAL YRRAQGWQGL KEYDQALADL KKAQGIAPED KAIQAELLKV KQKIKAQKDK EKAVYAKMFA
Cross-Reactivity:	Human
Characteristics:	Antibody reactive against mammalian transfected lysate.

Target Details

Target:	PPID
Alternative Name:	PPID (PPID Products)
Background:	Full Gene Name: peptidylprolyl isomerase D Synonyms: CYP-40,CYPD,MGC33096
Gene ID:	5481
NCBI Accession:	NM_005038
Pathways:	Nuclear Hormone Receptor Binding

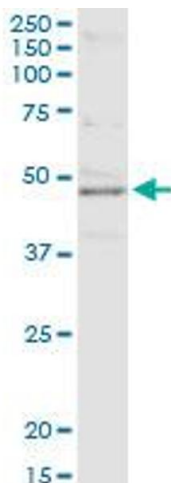
Application Details

Application Notes:	Optimal working dilution should be determined by the investigator.
Restrictions:	For Research Use only

Handling

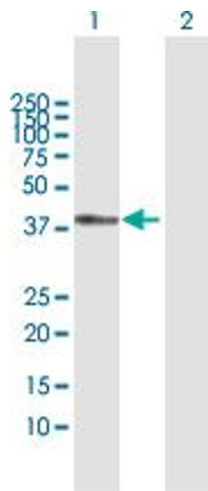
Format:	Liquid
Buffer:	No additive
Preservative:	Without preservative
Handling Advice:	Aliquot to avoid repeated freezing and thawing.
Storage:	-20 °C
Storage Comment:	Store at -20°C or lower. Aliquot to avoid repeated freezing and thawing.

Images



Immunoprecipitation

Image 1. Immunoprecipitation of PPID transfected lysate using anti-PPID MaxPab rabbit polyclonal antibody and Protein A Magnetic Bead , and immunoblotted with PPID purified MaxPab mouse polyclonal antibody (B01P) .



Western Blotting

Image 2. Western Blot analysis of PPID expression in transfected 293T cell line by PPID MaxPab polyclonal antibody.

Lane 1: PPID transfected lysate(40.8 KDa).

Lane 2: Non-transfected lysate.