

Datasheet for ABIN519087
anti-PPM1B antibody (AA 1-479)



[Go to Product page](#)

2 Images

Overview

Quantity:	100 µg
Target:	PPM1B
Binding Specificity:	AA 1-479
Reactivity:	Human
Host:	Rabbit
Clonality:	Polyclonal
Conjugate:	This PPM1B antibody is un-conjugated
Application:	Western Blotting (WB), Proximity Ligation Assay (PLA)

Product Details

Purpose:	Rabbit polyclonal antibody raised against a full-length human PPM1B protein.
Immunogen:	PPM1B (NP_002697.1, 1 a.a. ~ 479 a.a) full-length human protein.
Sequence:	<p>MGAFLDKPKT EKHNAHGAGN GLRYGLSSMQ GWRVEMEDAH TAVVGIPHGL EDWSFFAVYD GHAGSRVANY CSTHLLLEHIT TNEDFRAAGK SGSALELSVE NVKNGIRTGF LKIDEYMRNF SDLRNGMDRS GSTAVGVMMIS PKHIYFINCG DSRVLYRNG QVCFSTQDHK PCNPREKERI QNAGGSVMIQ RVNGSLAVSR ALGDYDYKCV DGKGPTEQLV SPEPEVYEIL RAEDEFIIL ACDGIWDVMS NEELCEYVKS RLEVSDLEN VCNWVVDTCV HKGSRDNMSI VLVCFNSNAPK VSDEAVKKDS ELDKHLESRV EEIMEKSGEE GMPDLAHVMR ILSAENIPNL PPGGGLAGKR NVIEAVYSRL NPHRESGAS DEAEESGSQG KLVEALRQMR INHRGNYRQL LEEMLTSYRL AKVEGEESPA EPAATATSSN SDAGNPVTMQ ESHTESSEGL AELDSSNEDA GTKMSGELKI</p>
Cross-Reactivity:	Human

Product Details

Characteristics: Antibody reactive against mammalian transfected lysate.

Target Details

Target: PPM1B

Alternative Name: PPM1B ([PPM1B Products](#))

Background: Full Gene Name: protein phosphatase 1B (formerly 2C), magnesium-dependent, beta isoform
Synonyms: MGC21657,PP2C-beta-X,PP2CB,PP2CBETA,PPC2BETAX

Gene ID: 5495

NCBI Accession: [NM_002706](#)

Application Details

Application Notes: Optimal working dilution should be determined by the investigator.

Restrictions: For Research Use only

Handling

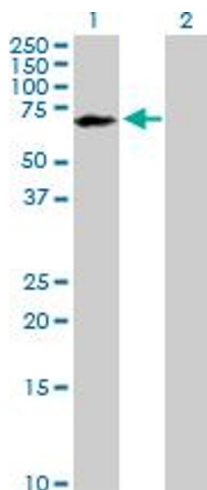
Buffer: In 1x PBS, pH 7.4

Handling Advice: Aliquot to avoid repeated freezing and thawing.

Storage: -20 °C

Storage Comment: Store at -20°C or lower. Aliquot to avoid repeated freezing and thawing.

Images

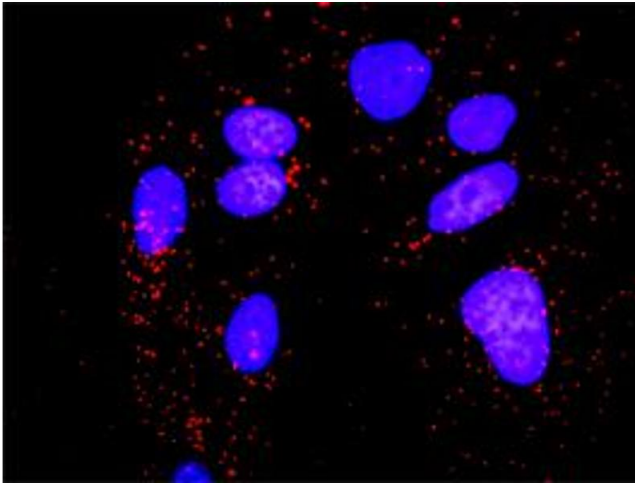


Western Blotting

Image 1. Western Blot analysis of PPM1B expression in transfected 293T cell line by PPM1B MaxPab polyclonal antibody.

Lane 1: PPM1B transfected lysate(52.60 KDa).

Lane 2: Non-transfected lysate.



Proximity Ligation Assay

Image 2. Proximity Ligation Analysis of protein-protein interactions between PPM1B and CHUK. HeLa cells were stained with anti-PPM1B rabbit purified polyclonal 1:1200 and anti-CHUK mouse monoclonal antibody 1:50. Each red dot represents the detection of protein-protein interaction complex, and nuclei were counterstained with DAPI (blue).