

Datasheet for ABIN519128
anti-PPP2R5C antibody (AA 1-100)

3 Images

[Go to Product page](#)

Overview

Quantity:	100 µg
Target:	PPP2R5C
Binding Specificity:	AA 1-100
Reactivity:	Human
Host:	Mouse
Clonality:	Monoclonal
Conjugate:	This PPP2R5C antibody is un-conjugated
Application:	Western Blotting (WB), ELISA, Proximity Ligation Assay (PLA)

Product Details

Purpose:	Mouse monoclonal antibody raised against a partial recombinant PPP2R5C.
Immunogen:	PPP2R5C (NP_002710.2, 1 a.a. ~ 100 a.a) partial recombinant protein with GST tag. MW of the GST tag alone is 26 KDa.
Sequence:	MLTCNKAGSR MVVDAANSNG PFQPVVLLHI RDVPPADQEK LFIQKLRQCC VLFDFVSDPL SDLKWKEVKR AALSEMVEYI THNRNVITEP IYPEVVHMFA
Clone:	3G9
Isotype:	IgG2a
Cross-Reactivity:	Human
Characteristics:	Antibody Reactive Against Recombinant Protein.

Target Details

Target:	PPP2R5C
Alternative Name:	PPP2R5C (PPP2R5C Products)
Background:	Full Gene Name: protein phosphatase 2, regulatory subunit B', gamma isoform Synonyms: B56G,MGC23064,PR61G
Gene ID:	5527
NCBI Accession:	NM_002719
Pathways:	PI3K-Akt Signaling

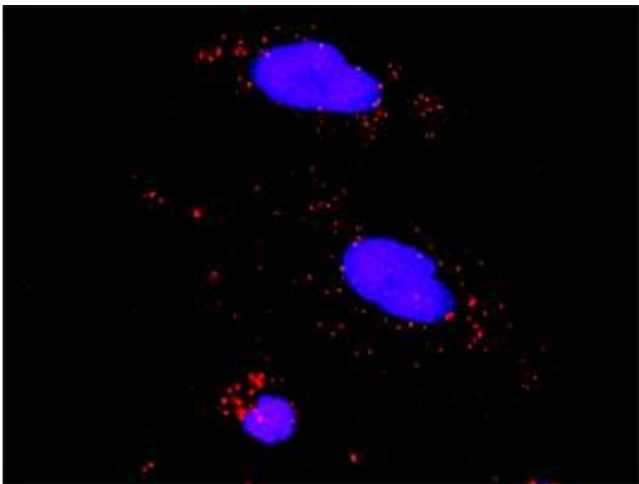
Application Details

Application Notes:	Optimal working dilution should be determined by the investigator.
Restrictions:	For Research Use only

Handling

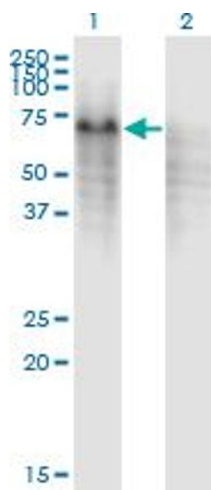
Buffer:	In 1x PBS, pH 7.4
Handling Advice:	Aliquot to avoid repeated freezing and thawing.
Storage:	-20 °C
Storage Comment:	Store at -20°C or lower. Aliquot to avoid repeated freezing and thawing.

Images



Proximity Ligation Assay

Image 1. Proximity Ligation Analysis of protein-protein interactions between TP53 and PPP2R5C. HeLa cells were stained with anti-TP53 rabbit purified polyclonal 1:1200 and anti-PPP2R5C mouse monoclonal antibody 1:50. Each red dot represents the detection of protein-protein interaction complex, and nuclei were counterstained with DAPI (blue).

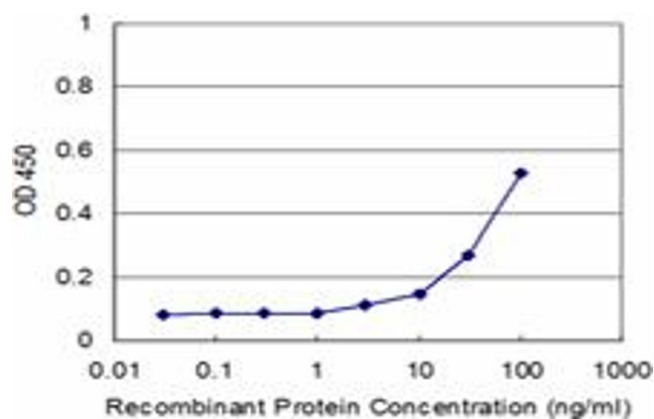


Western Blotting

Image 2. Western Blot analysis of PPP2R5C expression in transfected 293T cell line by PPP2R5C monoclonal antibody (M01), clone 3G9.

Lane 1: PPP2R5C transfected lysate(61.1 kDa).

Lane 2: Non-transfected lysate.



ELISA

Image 3. Detection limit for recombinant GST tagged PPP2R5C is approximately 3ng/ml as a capture antibody.