

Datasheet for ABIN519198
anti-PKN1 antibody (AA 1-942)



[Go to Product page](#)

2 Images

Overview

Quantity:	50 µg
Target:	PKN1
Binding Specificity:	AA 1-942
Reactivity:	Human
Host:	Mouse
Clonality:	Polyclonal
Conjugate:	This PKN1 antibody is un-conjugated
Application:	Western Blotting (WB)

Product Details

Purpose:	Mouse polyclonal antibody raised against a full-length human PKN1 protein.
Immunogen:	PKN1 (AAH40061.1, 1 a.a. ~ 942 a.a) full-length human protein.
Sequence:	MASDAVQSEP RSWSLLEQLG LAGADLAAPG VQQQLELERE RLRREIRKEL KLKEGAENLR RATDDLGRSL GPVELLLRGS SRRLDLLHQQ LQELHAHVVL PDPAATHDGP QSPGAGGPTC SATNLSRVAG LEKQLAIELK VKQGAENMIQ TYSNGSTKDR KLLLTAQQML QDSKTKIDII RMQLRRALQA GQLENQAAPD DTQGSPDLGA VELRIEELRH HFRVEHAVAE GAKNVLRLLS AAKAPDRKAV SEAQEKLTES NQKLGLLREA LERRLGELPA DHPKGRLLRE ELAAASSAAF STRLAGPFPA THYSTLCKPA PLTGTLEVRV VGCRDLPETI PWNPTPSMGG PGTPDSRPPF LSRPARGLYS RSGSLSGRSS LKAEAGENTSE VSTVLKLDNT VVGQTSWKPC GPNAWDQSFT LELERARELE LAVFWRDQRG LCALKFLKLE DFLDNERHEV QLDMEPQGCL VAEVTFRNPV IERIPRLRRQ KKIFSKQQGK AFQRRARQMNI DVATWVRLLR RLIPNATGTG TFSPGASPGS EARTTGDIVS EKLNLGTDSD SSPQKSSRDP PSSPSSLSSP IQESTAPELP SETQETPGPA

Product Details

LC SPLRKSPL TLEDFKFLAV LGRGHFGKVL LSEFRPSGEL FAIKALKKGD IVARDEVESL
MCEKRILAAV TSAGHPFLVN LFGCFQTPEH VCFVMEYSAG GDLMLHIHSD VFSEPRIFY
SACVVLGLQF LHEHKIVYRD LKLDNLLLD EGYVKIADFG LCKEKGMYGD RTSTFCGTPE
FLAPEVLTDT SYTRAVDWWG LGVLLYEMLV GESPFGDDE EEVFDIVND EVRYPRFLSA
EAIGIMRRL RRPERRLGS SERDAEDVKK QPFRTLGWE ALLARRLPPP FVPTLSGRTD
ISNFDEEFTG EAPTLSPPRD ARPLTAAEQ AFLDFDFVAG GC

Cross-Reactivity: Human

Characteristics: Antibody reactive against mammalian transfected lysate.

Target Details

Target: PKN1

Alternative Name: PKN1 ([PKN1 Products](#))

Background: Full Gene Name: protein kinase N1
Synonyms: DBK,MGC46204,PAK1,PKN,PKN-ALPHA,PRK1,PRKCL1

Gene ID: 5585

Application Details

Application Notes: Optimal working dilution should be determined by the investigator.

Restrictions: For Research Use only

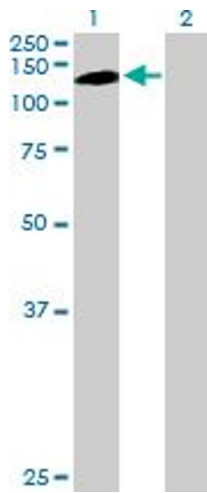
Handling

Buffer: In 1x PBS, pH 7.4

Handling Advice: Aliquot to avoid repeated freezing and thawing.

Storage: -20 °C

Storage Comment: Store at -20°C or lower. Aliquot to avoid repeated freezing and thawing.

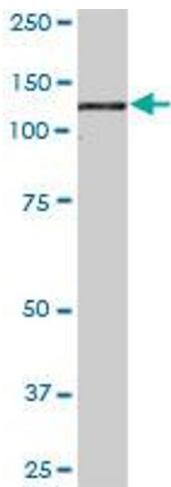


Western Blotting

Image 1. Western Blot analysis of PKN1 expression in transfected 293T cell line by PKN1 MaxPab polyclonal antibody.

Lane 1: PKN1 transfected lysate(103.62 KDa).

Lane 2: Non-transfected lysate.



Western Blotting

Image 2. PKN1 MaxPab polyclonal antibody. Western Blot analysis of PKN1 expression in human liver.