



Datasheet for ABIN519235
anti-JNK antibody (AA 1-384)



[Go to Product page](#)

8 Images

Overview

Quantity:	100 µg
Target:	JNK (MAPK8)
Binding Specificity:	AA 1-384
Reactivity:	Human
Host:	Mouse
Clonality:	Monoclonal
Conjugate:	This JNK antibody is un-conjugated
Application:	Western Blotting (WB), ELISA, Immunofluorescence (IF), Proximity Ligation Assay (PLA), RNA Interference (RNAi)

Product Details

Purpose:	Mouse monoclonal antibody raised against a full length recombinant MAPK8.
Immunogen:	MAPK8 (NP_002741.1, 1 a.a. ~ 384 a.a) full-length recombinant protein with GST tag. MW of the GST tag alone is 26 KDa.
Sequence:	MSRSKRDNF YSVEIGDSTF TVLKRYQNLK PIGSGAQGIV CAAYDAILER NVAIKKLSRP FQNQTHAKRA YRELVLMKCV NHKNIIGLLN VFTPQKSLEE FQDVYIVMEL MDANLCQVIQ MELDHERMSY LLYQMLCGIK HLHSGAIIHR DLKPSNIVVK SDCTLKILDF GLARTAGTSF MMTPYVVTRY YRAPEVILGM GYKENVDLWS VGCIMGEMVC HKILFPGRDY IDQWNKVIEQ LGTCPPEFMK KLQPTVRTYV ENRPKYAGYS FEKLFDPVLF PADSEHNKLK ASQARDLLSK MLVIDASKRI SVDEALQHPY INVWYDPSEA EAPPPKIPDK QLDEREHTIE EWKELIYKEV MDLEERTKNG VIRGQPSPLA QVQQ

Product Details

Clone:	2F11
Isotype:	IgG2a
Cross-Reactivity:	Human
Characteristics:	Antibody Reactive Against Recombinant Protein.

Target Details

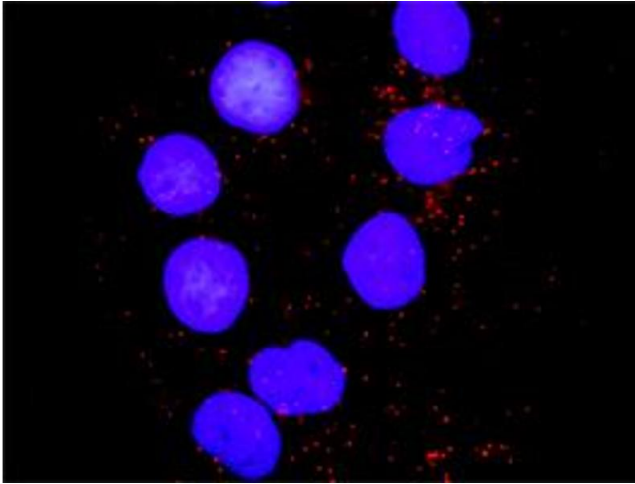
Target:	JNK (MAPK8)
Alternative Name:	MAPK8 (MAPK8 Products)
Background:	Full Gene Name: mitogen-activated protein kinase 8 Synonyms: JNK,JNK1,JNK1A2,JNK21B1/2,PRKM8,SAPK1
Gene ID:	5599
NCBI Accession:	NM_002750
Pathways:	MAPK Signaling , WNT Signaling , TLR Signaling , Fc-epsilon Receptor Signaling Pathway , Neurotrophin Signaling Pathway , Activation of Innate immune Response , Hepatitis C , Toll-Like Receptors Cascades , Signaling of Hepatocyte Growth Factor Receptor , S100 Proteins

Application Details

Application Notes:	Optimal working dilution should be determined by the investigator.
Restrictions:	For Research Use only

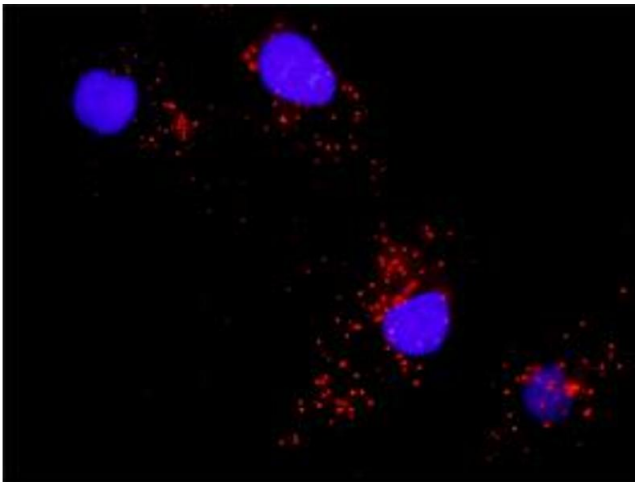
Handling

Buffer:	In 1x PBS, pH 7.4
Handling Advice:	Aliquot to avoid repeated freezing and thawing.
Storage:	-20 °C
Storage Comment:	Store at -20°C or lower. Aliquot to avoid repeated freezing and thawing.



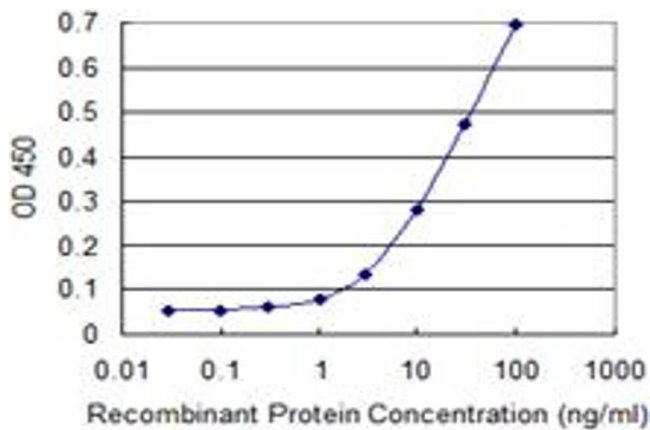
Proximity Ligation Assay

Image 1. Proximity Ligation Analysis of protein-protein interactions between PXN and MAPK8. Huh7 cells were stained with anti-PXN rabbit purified polyclonal 1:1200 and anti-MAPK8 mouse monoclonal antibody 1:50. Each red dot represents the detection of protein-protein interaction complex, and nuclei were counterstained with DAPI (blue).



Proximity Ligation Assay

Image 2. Proximity Ligation Analysis of protein-protein interactions between BAD and MAPK8. Mahlavu cells were stained with anti-BAD rabbit purified polyclonal 1:1200 and anti-MAPK8 mouse monoclonal antibody 1:50. Each red dot represents the detection of protein-protein interaction complex, and nuclei were counterstained with DAPI (blue).



ELISA

Image 3. Detection limit for recombinant GST tagged MAPK8 is 1 ng/ml as a capture antibody.

Please check the [product details page](#) for more images. Overall 8 images are available for ABIN519235.