

Datasheet for ABIN519268  
**anti-MAP2K7 antibody (AA 1-426)**



[Go to Product page](#)

1 Image

## Overview

Quantity:	100 µg
Target:	MAP2K7
Binding Specificity:	AA 1-426
Reactivity:	Human
Host:	Rabbit
Clonality:	Polyclonal
Conjugate:	This MAP2K7 antibody is un-conjugated
Application:	Western Blotting (WB)

## Product Details

Purpose:	Rabbit polyclonal antibody raised against a full-length human MAP2K7 protein.
Immunogen:	MAP2K7 (AAH38295.1, 1 a.a. ~ 426 a.a) full-length human protein.
Sequence:	MAASSLEQKL SRLEAKLKQE NREARRRIDL NLDISPQRPR PTLQLPLAND GGSRSPPSES SPQHPTPPAR PRHMLGLPST LFTPRSMESI EIDQKLQEIM KQTGYLTIGG QRYQAEINDL ENLGEMGSGT CGQVWKMFRF KTGHVIAVKQ MRRSGNKEEN KRILMDLDVV LKSHDCPYIV QCFGTFITNT DVFIAMELMG TCAEKLKCRM QGPIPERILG KMTVAIVKAL YYLKEKHGVI HRDVKPSNIL LDERGQIKLC DFGISGRLVD SKAKTRSAGC AAYMAPERID PPDPTKPDYD IRADVWSLGI SLPCPSPSQV ELATGQFPYK NCKTDFEVLV KVLQEEPPLL PGHMGFSGDF QSFVKDCLTK DHRKRPKYNK LLEHSFIKRY ETLEVDVASW FKDVMAKTES PRTSGVLSQP HLPFFR
Cross-Reactivity:	Human

## Product Details

---

Characteristics: Antibody reactive against mammalian transfected lysate.

## Target Details

---

Target: MAP2K7

Alternative Name: MAP2K7 ([MAP2K7 Products](#))

Background: Full Gene Name: mitogen-activated protein kinase kinase 7  
Synonyms: Jnk2,MAPKK7,MKK7,PRKMK7

Gene ID: 5609

Pathways: [MAPK Signaling](#), [TLR Signaling](#), [Fc-epsilon Receptor Signaling Pathway](#), [Activation of Innate immune Response](#), [Toll-Like Receptors Cascades](#), [BCR Signaling](#)

## Application Details

---

Application Notes: Optimal working dilution should be determined by the investigator.

Restrictions: For Research Use only

## Handling

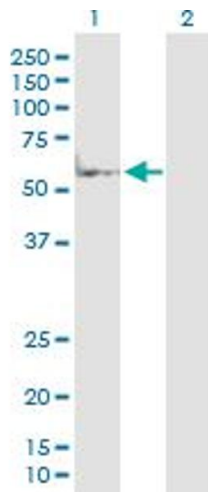
---

Buffer: In 1x PBS, pH 7.4

Handling Advice: Aliquot to avoid repeated freezing and thawing.

Storage: -20 °C

Storage Comment: Store at -20°C or lower. Aliquot to avoid repeated freezing and thawing.



### Western Blotting

**Image 1.** Western Blot analysis of MAP2K7 expression in transfected 293T cell line by MAP2K7 MaxPab polyclonal antibody.

Lane 1: MAP2K7 transfected lysate(48.20 KDa).

Lane 2: Non-transfected lysate.