



[Go to Product page](#)

Datasheet for ABIN519297

anti-PROP1 antibody (AA 1-226)

1 Image

Overview

Quantity:	50 µg
Target:	PROP1
Binding Specificity:	AA 1-226
Reactivity:	Human
Host:	Mouse
Clonality:	Polyclonal
Conjugate:	This PROP1 antibody is un-conjugated
Application:	Western Blotting (WB)

Product Details

Purpose:	Mouse polyclonal antibody raised against a full-length human PROP1 protein.
Immunogen:	PROP1 (NP_006252.1, 1 a.a. ~ 226 a.a) full-length human protein.
Sequence:	MEAERRRQAE KPKKGRVGSS LLPERHPATG TPTTTVDSSA PPCRRLLPGAG GGRSRFSPQG GQRGRPHSRR RHRTTFSPVQ LEQLESAFGR NQYPDIWARE SLARDTGLSE ARIQVWFQNR RAKQRKQERS LLQPLAHLSP AAFSSFLPES TACPYSYAAP PPPVTCFPHP YSHALPSQPS TGGAFALSHQ SEDWYPTLHP APAGHLPCPP PPPMLPLSLE PSKSWN
Cross-Reactivity:	Human
Characteristics:	Antibody reactive against mammalian transfected lysate.

Target Details

Target:	PROP1
---------	-------

Target Details

Alternative Name:	PROP1 (PROP1 Products)
Background:	Full Gene Name: PROP paired-like homeobox 1 Synonyms:
Gene ID:	5626
NCBI Accession:	NM_006261

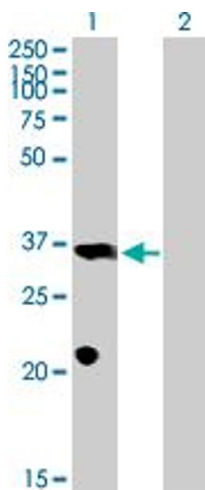
Application Details

Application Notes:	Optimal working dilution should be determined by the investigator.
Restrictions:	For Research Use only

Handling

Buffer:	In 1x PBS, pH 7.4
Handling Advice:	Aliquot to avoid repeated freezing and thawing.
Storage:	-20 °C
Storage Comment:	Store at -20°C or lower. Aliquot to avoid repeated freezing and thawing.

Images



Western Blotting

Image 1. Western Blot analysis of PROP1 expression in transfected 293T cell line by PROP1 MaxPab polyclonal antibody.

Lane 1: PROP1 transfected lysate(24.86 KDa).

Lane 2: Non-transfected lysate.