



Datasheet for ABIN519303
anti-PROX1 antibody (AA 638-737)



[Go to Product page](#)

3 Images

Overview

Quantity:	100 µg
Target:	PROX1
Binding Specificity:	AA 638-737
Reactivity:	Human
Host:	Mouse
Clonality:	Monoclonal
Conjugate:	This PROX1 antibody is un-conjugated
Application:	Western Blotting (WB), ELISA, Immunofluorescence (IF)

Product Details

Purpose:	Mouse monoclonal antibody raised against a partial recombinant PROX1.
Immunogen:	PROX1 (NP_002754.2, 638 a.a. ~ 737 a.a) partial recombinant protein with GST tag. MW of the GST tag alone is 26 KDa.
Sequence:	YARQAINdGV TSTEELSITR DCELYRALNM HYNKANDFEV PERFLEVAQI TLREFFNAII AGKDVDPswK KAIYKVICKL DSEVPEIFKS PNCLQELLHE
Clone:	1E7
Isotype:	IgG2b
Cross-Reactivity:	Human
Characteristics:	Antibody Reactive Against Recombinant Protein.

Target Details

Target:	PROX1
Alternative Name:	PROX1 (PROX1 Products)
Background:	Full Gene Name: prospero homeobox 1 Synonyms:
Gene ID:	5629
NCBI Accession:	NM_002763
Pathways:	Stem Cell Maintenance, Regulation of Muscle Cell Differentiation

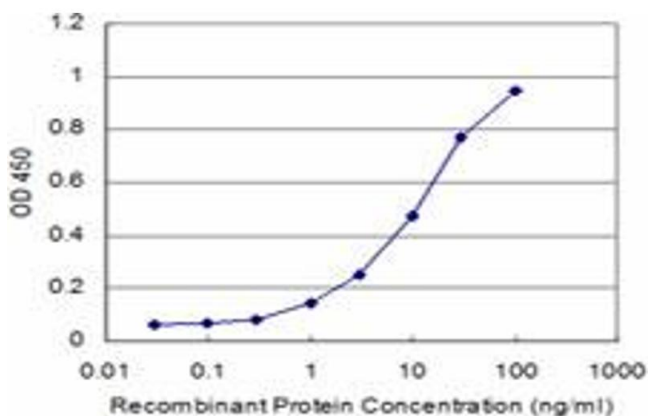
Application Details

Application Notes:	Optimal working dilution should be determined by the investigator.
Restrictions:	For Research Use only

Handling

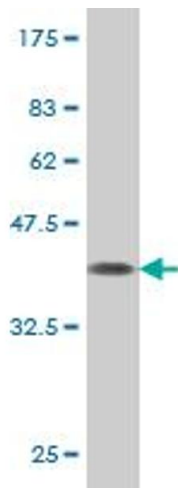
Buffer:	In 1x PBS, pH 7.4
Handling Advice:	Aliquot to avoid repeated freezing and thawing.
Storage:	-20 °C
Storage Comment:	Store at -20°C or lower. Aliquot to avoid repeated freezing and thawing.

Images



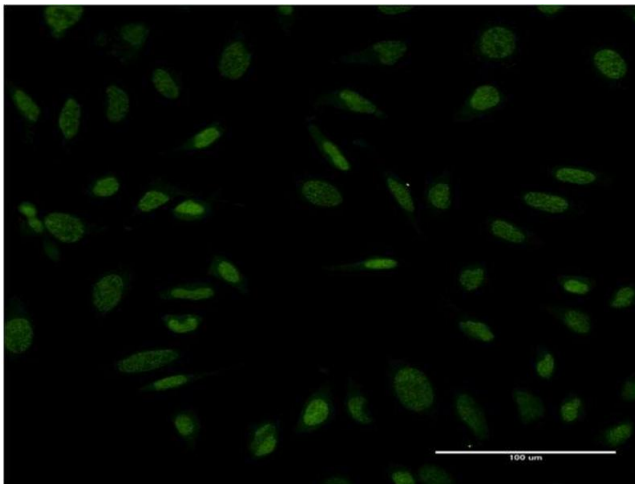
ELISA

Image 1. Detection limit for recombinant GST tagged PROX1 is approximately 1ng/ml as a capture antibody.



Western Blotting

Image 2. Western Blot detection against Immunogen (36.74 kDa).



Immunofluorescence

Image 3. Immunofluorescence of monoclonal antibody to PROX1 on HeLa cell. [antibody concentration 10 ug/ml]