

Datasheet for ABIN519317
anti-LGMN antibody (AA 1-433)



[Go to Product page](#)

3 Images

Overview

Quantity:	50 µg
Target:	LGMN
Binding Specificity:	AA 1-433
Reactivity:	Human
Host:	Mouse
Clonality:	Polyclonal
Conjugate:	This LGMN antibody is un-conjugated
Application:	Western Blotting (WB), Immunohistochemistry (Paraffin-embedded Sections) (IHC (p))

Product Details

Purpose:	Mouse polyclonal antibody raised against a full-length human LGMN protein.
Immunogen:	LGMN (NP_001008530.1, 1 a.a. ~ 433 a.a) full-length human protein.
Sequence:	MVWKVAVFLS VALGIGAVPI DDPEDGGKHW VVIVAGSNGW YNYRHQADAC HAYQIIHRNG IPDEQIVVMM YDDIAYSEDN PTPGIVINRP NGTDVYQGVP KDYTGEDVTP QNFLAVLRGD AEAVKGIGSG KVLKSGPQDH VFIYFTDHGS TGILVFPNED LHVKDLNETI HYMYKHKMYR KMFVYIEACE SGSMMNHLPD NINVYATTAA NPRESSYACY YDEKRSTYLG DWYSVNW MED SDVEDLTKET LHKQYHLVKS HTNTSHVMQY GNKTISTMKV MQFQGMKRKA SSPVPLPPVT HLDLTPSPDV PLTIMKRKLM NTNDLEESRQ LTEEIQRHLD ARHLIEKSVR KIVSLLAASE AEVEQLLSER APLTGHSCYP EALLHFRTHC FNWHSPTYEY ALRHLYVLVN LCEKPYPLHR IKLSMDHVCL GHY
Cross-Reactivity:	Human

Product Details

Characteristics: Antibody reactive against mammalian transfected lysate.

Target Details

Target: LGMN

Alternative Name: LGMN ([LGMN Products](#))

Background: Full Gene Name: legumain
Synonyms: AEP,LGMN1,PRSC1

Gene ID: 5641

NCBI Accession: [NM_001008530](#)

Pathways: [Metabolism of Steroid Hormones and Vitamin D](#), [Activation of Innate immune Response](#), [Toll-Like Receptors Cascades](#)

Application Details

Application Notes: Optimal working dilution should be determined by the investigator.

Restrictions: For Research Use only

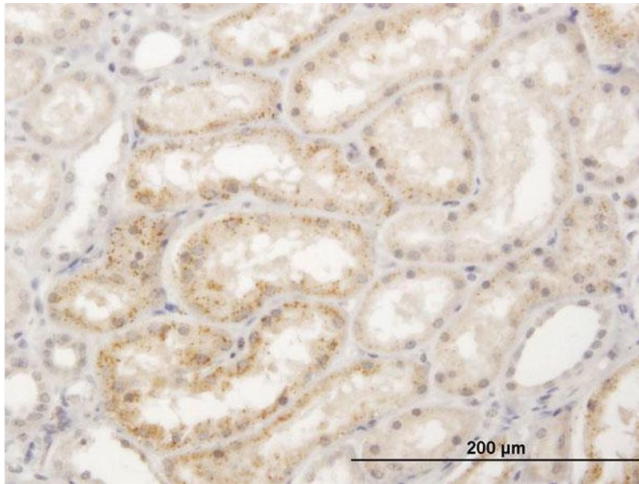
Handling

Buffer: In 1x PBS, pH 7.4

Handling Advice: Aliquot to avoid repeated freezing and thawing.

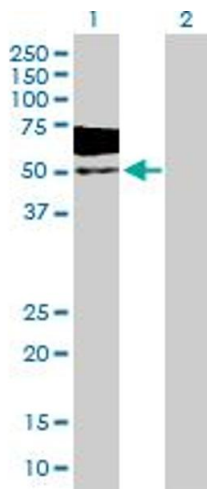
Storage: -20 °C

Storage Comment: Store at -20°C or lower. Aliquot to avoid repeated freezing and thawing.



Immunostaining

Image 1. Immunoperoxidase of purified MaxPab antibody to LGMN on formalin-fixed paraffin-embedded human kidney. [antibody concentration 3 ug/ml]

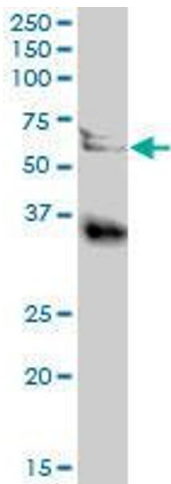


Western Blotting

Image 2. Western Blot analysis of LGMN expression in transfected 293T cell line by LGMN MaxPab polyclonal antibody.

Lane 1: LGMN transfected lysate(47.63 KDa).

Lane 2: Non-transfected lysate.



Western Blotting

Image 3. LGMN MaxPab polyclonal antibody. Western Blot analysis of LGMN expression in human kidney.