



[Go to Product page](#)

Datasheet for ABIN519321
anti-PRSS1 antibody (AA 1-247)

2 Images

Overview

Quantity:	50 µg
Target:	PRSS1
Binding Specificity:	AA 1-247
Reactivity:	Human
Host:	Mouse
Clonality:	Polyclonal
Conjugate:	This PRSS1 antibody is un-conjugated
Application:	Western Blotting (WB)

Product Details

Purpose:	Mouse polyclonal antibody raised against a full-length human PRSS1 protein.
Immunogen:	PRSS1 (NP_002760.1, 1 a.a. ~ 247 a.a) full-length human protein.
Sequence:	MNPLLLITFV AAALAAPFDD DDKIVGGYNC EENSVPYQVS LNSGYHFCGG SLINEQWVVS AGHCYKSRIQ VRLGEHNIEV LEGNEQFINA AKIIRHPQYD RKTLNNDIML IKLSSRAVIN ARVSTISLPT APPATGTKCL ISGWGNTASS GADYPDELQC LDAPVLSQAK CEASYPGKIT SNMFCVGFLE GGDSCQGDS GGPVVCNGQL QGVVSWGDC AQKNKPGVYT KVYNYVKWIK NTIAANS
Cross-Reactivity:	Human
Characteristics:	Antibody reactive against mammalian transfected lysate.

Target Details

Target:	PRSS1
Alternative Name:	PRSS1 (PRSS1 Products)
Background:	Full Gene Name: protease, serine, 1 (trypsin 1) Synonyms: MGC120175,MGC149362,TRP1,TRY1,TRY4,TRYP1
Gene ID:	5644
NCBI Accession:	NM_002769

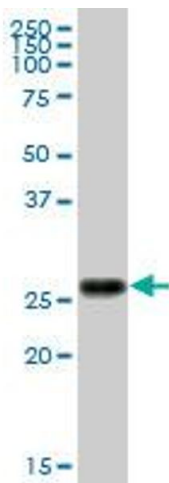
Application Details

Application Notes:	Optimal working dilution should be determined by the investigator.
Restrictions:	For Research Use only

Handling

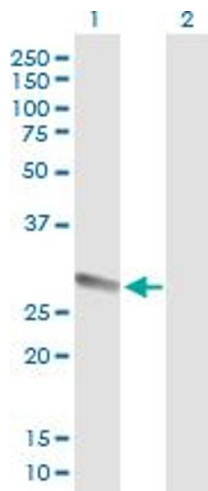
Buffer:	In 1x PBS, pH 7.4
Handling Advice:	Aliquot to avoid repeated freezing and thawing.
Storage:	-20 °C
Storage Comment:	Store at -20°C or lower. Aliquot to avoid repeated freezing and thawing.

Images



Western Blotting

Image 1. PRSS1 MaxPab polyclonal antibody. Western Blot analysis of PRSS1 expression in human pancreas.



Western Blotting

Image 2. Western Blot analysis of PRSS1 expression in transfected 293T cell line by PRSS1 MaxPab polyclonal antibody.

Lane 1: PRSS1 transfected lysate(27.17 KDa).

Lane 2: Non-transfected lysate.