



[Go to Product page](#)

Datasheet for ABIN519322

anti-PRSS1 antibody (AA 1-247)

3 Images

Overview

Quantity:	100 µL
Target:	PRSS1
Binding Specificity:	AA 1-247
Reactivity:	Human
Host:	Rabbit
Clonality:	Polyclonal
Conjugate:	This PRSS1 antibody is un-conjugated
Application:	Western Blotting (WB), Immunoprecipitation (IP)

Product Details

Purpose:	Rabbit polyclonal antibody raised against a full-length human PRSS1 protein.
Immunogen:	PRSS1 (NP_002760.1, 1 a.a. ~ 247 a.a) full-length human protein.
Sequence:	MNPLLLITFV AAALAAPFDD DDKIVGGYNC EENSVPYQVS LNSGYHFCGG SLINEQWVVS AGHCYKSRIQ VRLGEHNIEV LEGNEQFINA AKIIRHPQYD RKTLLNNDIML IKLSSRAVIN ARVSTISLPT APPATGTKCL ISGWGNTASS GADYPDELQC LDAPVLSQAK CEASYPGKIT SNMFCVGFLE GGDSCQGDS GGPVVCNGQL QGVVSWGDC AQKNKPGVYT KVYNYVKWIK NTIAANS
Cross-Reactivity:	Human
Characteristics:	Antibody reactive against mammalian transfected lysate.

Target Details

Target:	PRSS1
Alternative Name:	PRSS1 (PRSS1 Products)
Background:	Full Gene Name: protease, serine, 1 (trypsin 1) Synonyms: MGC120175,MGC149362,TRP1,TRY1,TRY4,TRYP1
Gene ID:	5644
NCBI Accession:	NM_002769

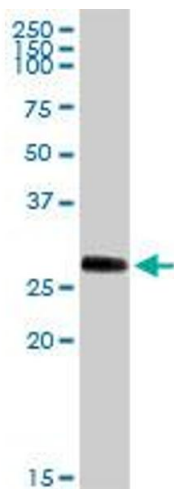
Application Details

Application Notes:	Optimal working dilution should be determined by the investigator.
Restrictions:	For Research Use only

Handling

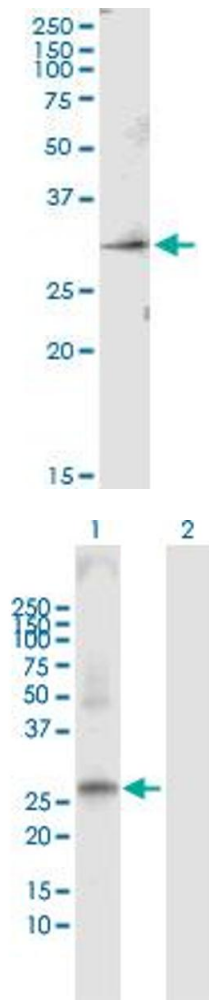
Format:	Liquid
Buffer:	No additive
Preservative:	Without preservative
Handling Advice:	Aliquot to avoid repeated freezing and thawing.
Storage:	-20 °C
Storage Comment:	Store at -20°C or lower. Aliquot to avoid repeated freezing and thawing.

Images



Western Blotting

Image 1. PRSS1 MaxPab rabbit polyclonal antibody. Western Blot analysis of PRSS1 expression in human pancreas.



Immunoprecipitation

Image 2. Immunoprecipitation of PRSS1 transfected lysate using anti-PRSS1 MaxPab rabbit polyclonal antibody and Protein A Magnetic Bead , and immunoblotted with PRSS1 purified MaxPab mouse polyclonal antibody (B01P) .

Western Blotting

Image 3. Western Blot analysis of PRSS1 expression in transfected 293T cell line by PRSS1 MaxPab polyclonal antibody.

Lane 1: PRSS1 transfected lysate(26.60 KDa).

Lane 2: Non-transfected lysate.