

Datasheet for ABIN519381  
**anti-PSMB8 antibody (AA 1-272)**



[Go to Product page](#)

3 Images

Overview

Quantity:	50 µg
Target:	PSMB8
Binding Specificity:	AA 1-272
Reactivity:	Human
Host:	Mouse
Clonality:	Polyclonal
Conjugate:	This PSMB8 antibody is un-conjugated
Application:	Western Blotting (WB), Immunofluorescence (IF)

Product Details

Purpose:	Mouse polyclonal antibody raised against a full-length human PSMB8 protein.
Immunogen:	PSMB8 (NP_004150.1, 1 a.a. ~ 272 a.a) full-length human protein.
Sequence:	MLIGTPTPRD TTPSSWLTSS LLVEAAPLDD TTLPTPVSSG CPGLEPTEFF QSLGGDGERN VQIEMAHGTT TLAFKFQHG V IAAVDSRASA GSYISALRVN KVIEINPYLL GTMSGCAADC QYWERLLAKE CRLYYLRNGE RISVSAASKL LSNMMCQYRG MGLSMGSMIC GWDKKGPGLY YVDEHGTRLS GNMFSTGSGN TYAYGVMDSG YRPNLSPEEA YDLGRRAIAY ATHRDSYSSG VVNMYHMKED GWVKVESTDV SDLLHQYREA NQ
Cross-Reactivity:	Human
Characteristics:	Antibody reactive against mammalian transfected lysate.

## Target Details

Target:	PSMB8
Alternative Name:	PSMB8 ( <a href="#">PSMB8 Products</a> )
Background:	Full Gene Name: proteasome (prosome, macropain) subunit, beta type, 8 (large multifunctional peptidase 7) Synonyms: D6S216,D6S216E,LMP7,MGC1491,PSMB5i,RING10,beta5i
Gene ID:	5696
NCBI Accession:	<a href="#">NM_004159</a>
Pathways:	<a href="#">Mitotic G1-G1/S Phases</a> , <a href="#">DNA Replication</a> , <a href="#">Synthesis of DNA</a>

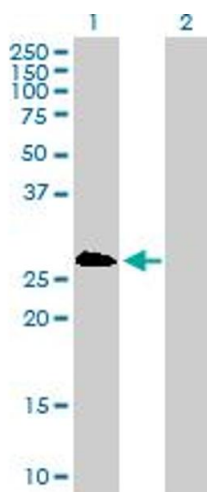
## Application Details

Application Notes:	Optimal working dilution should be determined by the investigator.
Restrictions:	For Research Use only

## Handling

Buffer:	In 1x PBS, pH 7.4
Handling Advice:	Aliquot to avoid repeated freezing and thawing.
Storage:	-20 °C
Storage Comment:	Store at -20°C or lower. Aliquot to avoid repeated freezing and thawing.

## Images

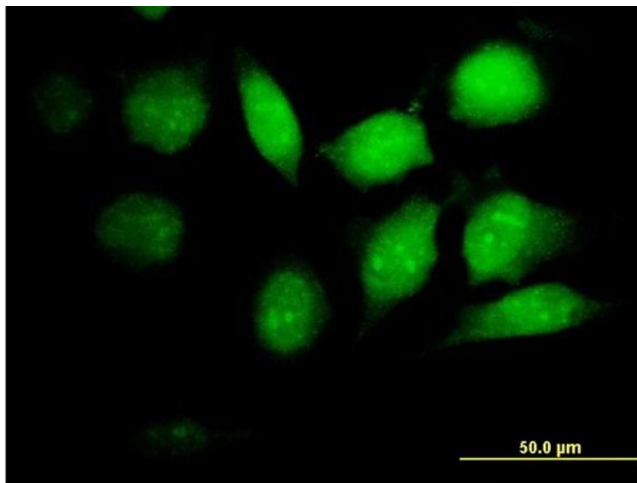


### Western Blotting

**Image 1.** Western Blot analysis of PSMB8 expression in transfected 293T cell line by PSMB8 MaxPab polyclonal antibody.

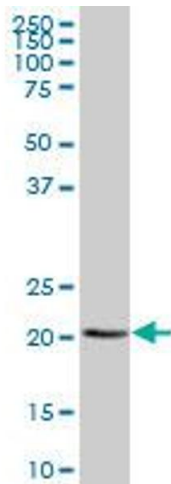
Lane 1: PSMB8 transfected lysate(29.92 KDa).

Lane 2: Non-transfected lysate.



### Immunofluorescence

**Image 2.** Immunofluorescence of purified MaxPab antibody to PSMB8 on HeLa cell. [antibody concentration 10 ug/ml]



### Western Blotting

**Image 3.** PSMB8 MaxPab polyclonal antibody. Western Blot analysis of PSMB8 expression in human placenta.