

Datasheet for ABIN519392
anti-PSMC6 antibody (AA 290-389)

7 Images

[Go to Product page](#)

Overview

Quantity:	100 µg
Target:	PSMC6
Binding Specificity:	AA 290-389
Reactivity:	Human
Host:	Mouse
Clonality:	Monoclonal
Conjugate:	This PSMC6 antibody is un-conjugated
Application:	Western Blotting (WB), ELISA, Immunofluorescence (IF), RNA Interference (RNAi)

Product Details

Purpose:	Mouse monoclonal antibody raised against a partial recombinant PSMC6.
Immunogen:	PSMC6 (AAH05390, 290 a.a. ~ 389 a.a) partial recombinant protein with GST tag. MW of the GST tag alone is 26 KDa.
Sequence:	LRPGRLDRKI HIDLPNEQAR LDILKIHAGP ITKHGEIDYE AIVKLSDGFN GADLRNVCTE AGMFAIRADH DFVVQEDFMK AVRKVADSKK LESKLDYKPV
Clone:	2C4
Isotype:	IgG2a
Cross-Reactivity:	Human, Mouse, Rat
Characteristics:	Antibody Reactive Against Recombinant Protein.

Target Details

Target:	PSMC6
Alternative Name:	PSMC6 (PSMC6 Products)
Background:	Full Gene Name: proteasome (prosome, macropain) 26S subunit, ATPase, 6 Synonyms: CADP44,MGC12520,P44,SUG2,p42
Gene ID:	5706
Pathways:	Mitotic G1-G1/S Phases , DNA Replication , Synthesis of DNA , Ubiquitin Proteasome Pathway

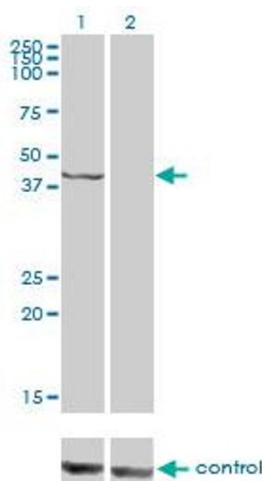
Application Details

Application Notes:	Optimal working dilution should be determined by the investigator.
Restrictions:	For Research Use only

Handling

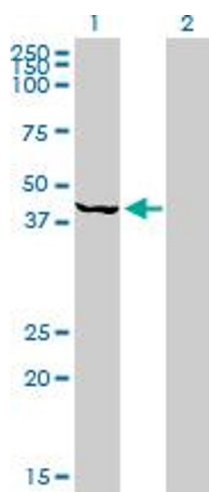
Buffer:	In 1x PBS, pH 7.4
Handling Advice:	Aliquot to avoid repeated freezing and thawing.
Storage:	-20 °C
Storage Comment:	Store at -20°C or lower. Aliquot to avoid repeated freezing and thawing.

Images



Western Blotting

Image 1. Western blot analysis of PSMC6 over-expressed 293 cell line, cotransfected with PSMC6 Validated Chimera RNAi (Lane 2) or non-transfected control (Lane 1). Blot probed with PSMC6 monoclonal antibody (M02), clone 2C4. GAPDH (36.1 kDa) used as specificity and loading control.

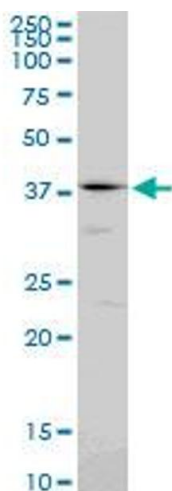


Western Blotting

Image 2. Western Blot analysis of PSMC6 expression in transfected 293T cell line by PSMC6 monoclonal antibody (M02), clone 2C4.

Lane 1: PSMC6 transfected lysate(44.2 KDa).

Lane 2: Non-transfected lysate.



Western Blotting

Image 3. PSMC6 monoclonal antibody (M02), clone 2C4. Western Blot analysis of PSMC6 expression in NIH/3T3.

Please check the [product details page](#) for more images. Overall 7 images are available for ABIN519392.