



[Go to Product page](#)

Datasheet for ABIN519407

## anti-PSMD8 antibody (AA 1-257)

### 2 Images

#### Overview

Quantity:	50 µg
Target:	PSMD8
Binding Specificity:	AA 1-257
Reactivity:	Human
Host:	Mouse
Clonality:	Polyclonal
Conjugate:	This PSMD8 antibody is un-conjugated
Application:	Western Blotting (WB)

#### Product Details

Purpose:	Mouse polyclonal antibody raised against a full-length human PSMD8 protein.
Immunogen:	PSMD8 (NP_002803.1, 1 a.a. ~ 257 a.a) full-length human protein.
Sequence:	MYEQLKGEWN RKSPNLSKCG EELGRLKLV LELNFLPTTG TKLTKQQLIL ARDILEIGAQ WSILRKDIPS FERYMAQLKC YFDYKEQLP ESAYMHQLLG LNULLFLLSQN RVAEFHTELE RLPAKDIQTN VYIKHPVSLE QYLMEGSYNK VFLAKGNIPA ESYTFFIDIL LDTIRDEIAG CIEKAYEKIL FTEATRILFF NTPKKMTDYA KKRGWVLGPN NYYSFASQQQ KPEDTTIPST ELAKQVIEYA RQLEMIV
Cross-Reactivity:	Human
Characteristics:	Antibody reactive against mammalian transfected lysate.

## Target Details

Target:	PSMD8
Alternative Name:	PSMD8 ( <a href="#">PSMD8 Products</a> )
Background:	Full Gene Name: proteasome (prosome, macropain) 26S subunit, non-ATPase, 8 Synonyms: HIP6,HYPF,MGC1660,Nin1p,Rpn12,S14,p31
Gene ID:	5714
NCBI Accession:	<a href="#">NM_002812</a>
Pathways:	<a href="#">Mitotic G1-G1/S Phases</a> , <a href="#">DNA Replication</a> , <a href="#">Proton Transport</a> , <a href="#">Synthesis of DNA</a> , <a href="#">SARS-CoV-2 Protein Interactome</a> , <a href="#">Ubiquitin Proteasome Pathway</a>

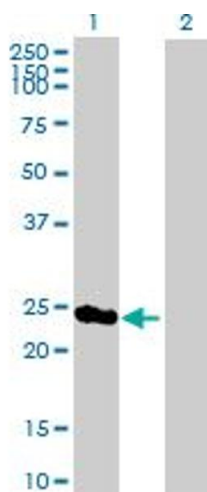
## Application Details

Application Notes:	Optimal working dilution should be determined by the investigator.
Restrictions:	For Research Use only

## Handling

Buffer:	In 1x PBS, pH 7.4
Handling Advice:	Aliquot to avoid repeated freezing and thawing.
Storage:	-20 °C
Storage Comment:	Store at -20°C or lower. Aliquot to avoid repeated freezing and thawing.

## Images

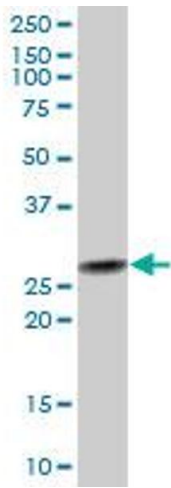


### Western Blotting

**Image 1.** Western Blot analysis of PSMD8 expression in transfected 293T cell line by PSMD8 MaxPab polyclonal antibody.

Lane 1: PSMD8 transfected lysate(28.27 KDa).

Lane 2: Non-transfected lysate.



### Western Blotting

**Image 2.** PSMD8 MaxPab polyclonal antibody. Western Blot analysis of PSMD8 expression in human placenta.