



[Go to Product page](#)

Datasheet for ABIN519446
anti-PTGER2 antibody (AA 1-358)

1 Image

Overview

Quantity:	100 µg
Target:	PTGER2
Binding Specificity:	AA 1-358
Reactivity:	Human
Host:	Rabbit
Clonality:	Polyclonal
Conjugate:	This PTGER2 antibody is un-conjugated
Application:	Western Blotting (WB)

Product Details

Purpose:	Rabbit polyclonal antibody raised against a full-length human PTGER2 protein.
Immunogen:	PTGER2 (NP_000947.2, 1 a.a. ~ 358 a.a) full-length human protein.
Sequence:	MGNASNDSQS EDCETRQWLP PGESPAISSV MFSAGVLGNL IALALLARRW RGDVGC SAGR RSSLSLFHVL VTELVFTDLL GTCLISPVVL ASYARNQTLV ALAPESRACT YFAMTFFS LATMLMLFAM ALERYLSIGH PYFYQRRVSR SGGGLAVLPVI YAVSLLFCSL PLLDYGQYVQ YCPGTWC FIR HGRTAYLQLY ATLLLLLIIVS VLACNFSVIL NLIRMHRRSR RSRCGPSLGS GRGGPGARRR GERVSMAEET DHLILLA IMT ITFAVCSLPF TIFAYMNETS SRKEKWDLQA LRFLSINSII DPWVFAILRP PVLRLMRSVL CCRISLRTQD ATQTSCSTQS DASKQADL
Cross-Reactivity:	Human
Characteristics:	Antibody reactive against mammalian transfected lysate.

Target Details

Target:	PTGER2
Alternative Name:	PTGER2 (PTGER2 Products)
Background:	Full Gene Name: prostaglandin E receptor 2 (subtype EP2), 53 kDa Synonyms: EP2
Gene ID:	5732
NCBI Accession:	NM_000956

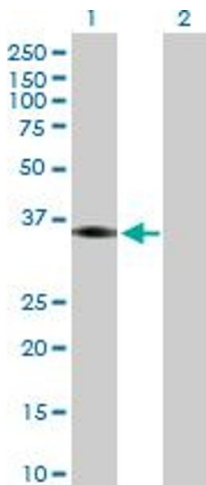
Application Details

Application Notes:	Optimal working dilution should be determined by the investigator.
Restrictions:	For Research Use only

Handling

Buffer:	In 1x PBS, pH 7.4
Handling Advice:	Aliquot to avoid repeated freezing and thawing.
Storage:	-20 °C
Storage Comment:	Store at -20°C or lower. Aliquot to avoid repeated freezing and thawing.

Images



Western Blotting

Image 1. Western Blot analysis of PTGER2 expression in transfected 293T cell line by PTGER2 MaxPab polyclonal antibody.

Lane 1: PTGER2 transfected lysate(39.80 KDa).

Lane 2: Non-transfected lysate.