



[Go to Product page](#)

Datasheet for ABIN519519  
**anti-PTPRF antibody (AA 1-353)**

1 Image

Overview

Quantity:	50 µg
Target:	PTPRF
Binding Specificity:	AA 1-353
Reactivity:	Human
Host:	Mouse
Clonality:	Polyclonal
Conjugate:	This PTPRF antibody is un-conjugated
Application:	Western Blotting (WB)

Product Details

Purpose:	Mouse polyclonal antibody raised against a full-length human PTPRF protein.
Immunogen:	PTPRF (ENSP00000361488, 1 a.a. ~ 353 a.a) full-length human protein.
Sequence:	MAPEPAPGRT MVPLVPALVM LGLVAGAHGD SKPVFIKVPE DQTGLSGGVA SFVCQATGEP KPRITWMKKG KKVSSQRFEV IEFDDGAGSV LRIQPLRVQR DEAIYECTAT NSLGEINTSA KLSVLEEEQL PPGFPSIDMG PQLKVVEKAR TATMLCAAGG NPDPEISWFK DFLPVDPATS NGRIKQLRSG GSPIRGALQI ESSEESDQ GK YECVATNSAG TRYAPANLY VRGKDSGSAW PLSPQSCAAP AGLSAQSPWC RHARDCHGPS LFSFLLLSAA AATAPTGQVP GVCHYFAFLP CRPMGKQPLL GAFVSFVGLA AWARSPMGIW SHPIRLLGVC ACVCAHTGTL ICV
Cross-Reactivity:	Human
Characteristics:	Antibody reactive against mammalian transfected lysate.

## Target Details

Target:	PTPRF
Alternative Name:	PTPRF ( <a href="#">PTPRF Products</a> )
Background:	Full Gene Name: protein tyrosine phosphatase, receptor type, F Synonyms: FLJ43335,FLJ45062,FLJ45567,LAR
Gene ID:	5792
Pathways:	<a href="#">EGFR Signaling Pathway</a>

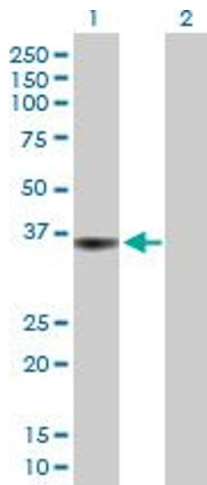
## Application Details

Application Notes:	Optimal working dilution should be determined by the investigator.
Restrictions:	For Research Use only

## Handling

Buffer:	In 1x PBS, pH 7.4
Handling Advice:	Aliquot to avoid repeated freezing and thawing.
Storage:	-20 °C
Storage Comment:	Store at -20°C or lower. Aliquot to avoid repeated freezing and thawing.

## Images



### Western Blotting

**Image 1.** Western Blot analysis of PTPRF expression in transfected 293T cell line by PTPRF MaxPab polyclonal antibody.

Lane 1: PTPRF transfected lysate(38.83 KDa).

Lane 2: Non-transfected lysate.