

Datasheet for ABIN519622
anti-rala antibody (pSer194)[Go to Product page](#)

2 Images

Overview

| | |
|----------------------|--|
| Quantity: | 100 µg |
| Target: | rala |
| Binding Specificity: | pSer194 |
| Reactivity: | Human |
| Host: | Mouse |
| Clonality: | Monoclonal |
| Conjugate: | This rala antibody is un-conjugated |
| Application: | ELISA, Immunofluorescence (IF), Proximity Ligation Assay (PLA) |

Product Details

| | |
|-------------------|---|
| Purpose: | Mouse monoclonal antibody raised against a partial synthetic RALA. |
| Immunogen: | Synthetic phosphopeptide (conjugated with KLH) corresponding to residues surrounding S194 of human RALA. The mark "*" on the immunogen sequence is the site of phosphorylation. |
| Sequence: | NGKKKRKSLA KRI |
| Clone: | 3E6 |
| Isotype: | IgG2a |
| Cross-Reactivity: | Human |
| Characteristics: | Antibody Reactive Against Recombinant Protein. |

Target Details

| | |
|-------------------|--|
| Target: | rala |
| Alternative Name: | RALA (rala Products) |
| Background: | Full Gene Name: v-ral simian leukemia viral oncogene homolog A (ras related) Synonyms: MGC48949,RAL |
| Gene ID: | 5898 |
| NCBI Accession: | NM_005402 |
| Pathways: | Neurotrophin Signaling Pathway , SARS-CoV-2 Protein Interactome |

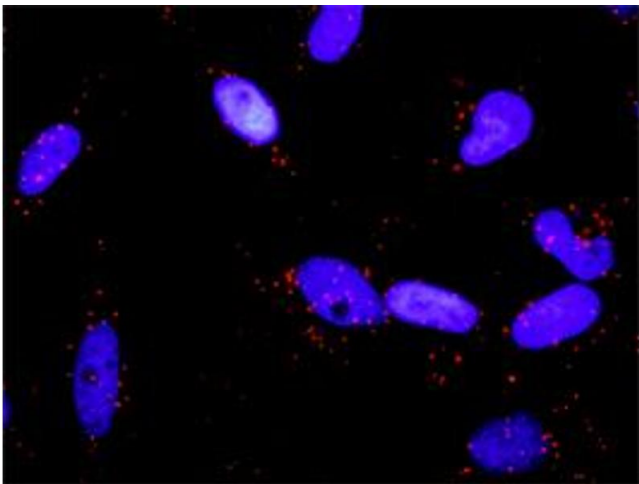
Application Details

| | |
|--------------------|--|
| Application Notes: | Optimal working dilution should be determined by the investigator. |
| Restrictions: | For Research Use only |

Handling

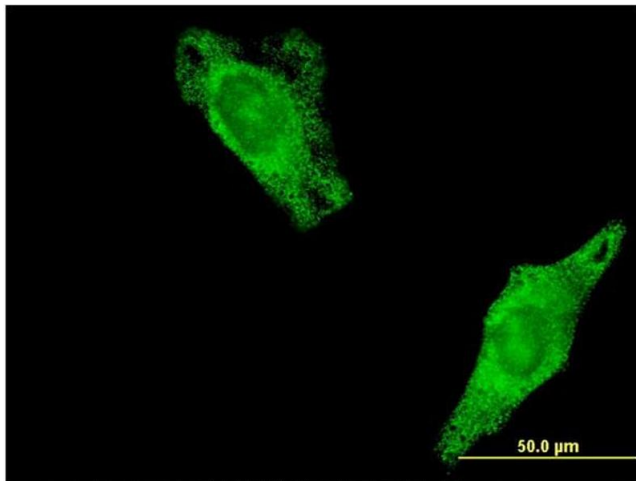
| | |
|------------------|--|
| Buffer: | In 1x PBS, pH 7.4 |
| Handling Advice: | Aliquot to avoid repeated freezing and thawing. |
| Storage: | -20 °C |
| Storage Comment: | Store at -20°C or lower. Aliquot to avoid repeated freezing and thawing. |

Images



Proximity Ligation Assay

Image 1. Proximity Ligation Analysis of protein-protein interactions between RALBP1 and RALA. HeLa cells were stained with anti-RALBP1 rabbit purified polyclonal 1:1200 and anti-RALA mouse monoclonal antibody 1:50. Each red dot represents the detection of protein-protein interaction complex, and nuclei were counterstained with DAPI (blue).



Immunofluorescence

Image 2. Immunofluorescence of monoclonal antibody to RALA on HeLa cell. [antibody concentration 10 ug/ml]