

Datasheet for ABIN519632

anti-RAP1A antibody (AA 1-184)



[Go to Product page](#)

3 Images

1 Publication

Overview

Quantity:	100 µg
Target:	RAP1A
Binding Specificity:	AA 1-184
Reactivity:	Human
Host:	Mouse
Clonality:	Monoclonal
Conjugate:	This RAP1A antibody is un-conjugated
Application:	Western Blotting (WB), ELISA, Proximity Ligation Assay (PLA)

Product Details

Purpose:	Mouse monoclonal antibody raised against a full length recombinant RAP1A.
Immunogen:	RAP1A (AAH14086.1, 1 a.a. ~ 184 a.a) full-length recombinant protein with GST tag. MW of the GST tag alone is 26 KDa.
Sequence:	MREYKLVVLG SGGVGKSALT VQFVQGIFVE KYDPTIEDSY RKQVEVDCQQ CMLEILDTAG TEQFTAMRDL YMKNQGQFAL VYSITAQSTF NDLQDLREQI LRVKDTEDVP MILVGNKCDL EDERVVGKEQ GQNLARQWCN CAFLESSAKS KINVNEIFYD LVRQINRKTP VEKKKPKKKKS CLLL
Clone:	3E1
Isotype:	IgG2a
Cross-Reactivity:	Human
Characteristics:	Antibody Reactive Against Recombinant Protein.

Target Details

Target:	RAP1A
Alternative Name:	RAP1A (RAP1A Products)
Background:	Full Gene Name: RAP1A, member of RAS oncogene family Synonyms: KREV-1,KREV1,RAP1,SMGP21
Gene ID:	5906
Pathways:	TCR Signaling , Neurotrophin Signaling Pathway , Signaling of Hepatocyte Growth Factor Receptor

Application Details

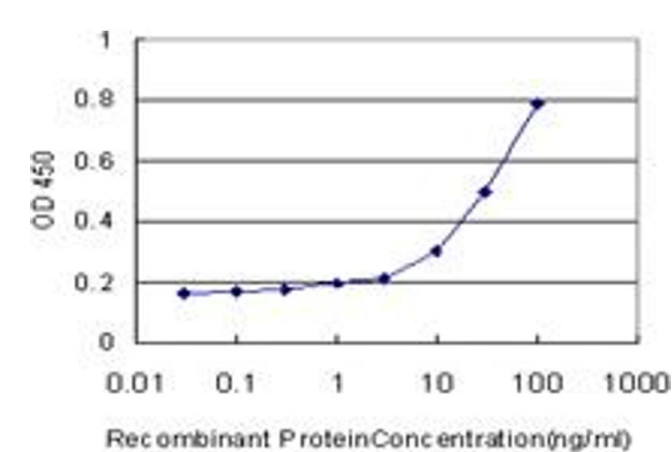
Application Notes:	Optimal working dilution should be determined by the investigator.
Restrictions:	For Research Use only

Handling

Buffer:	In 1x PBS, pH 7.4
Handling Advice:	Aliquot to avoid repeated freezing and thawing.
Storage:	-20 °C
Storage Comment:	Store at -20°C or lower. Aliquot to avoid repeated freezing and thawing.

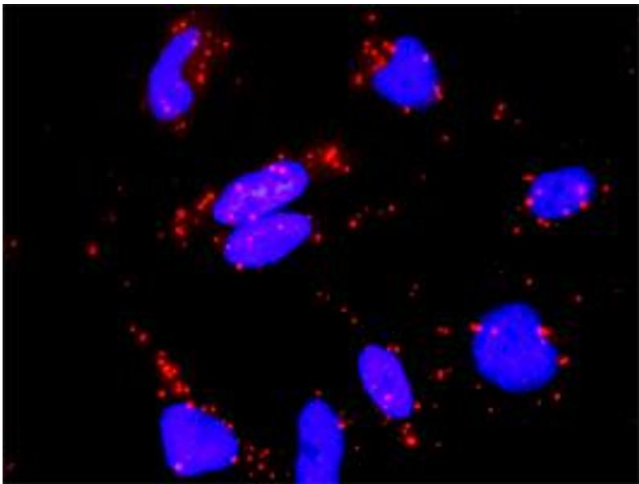
Publications

Product cited in:	Chen, Chuang, Huang, Fang, Huang, Tsai, Su, Shiu, Leu, Chien: "Overexpression of Rap-1A indicates a poor prognosis for oral cavity squamous cell carcinoma and promotes tumor cell invasion via Aurora-A modulation." in: The American journal of pathology , Vol. 182, Issue 2, pp. 516-28, (2013) (PubMed).
-------------------	--



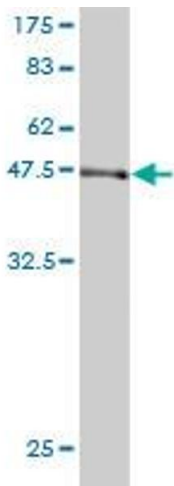
ELISA

Image 1. Detection limit for recombinant GST tagged RAP1A is approximately 1 ng/ml as a capture antibody.



Proximity Ligation Assay

Image 2. Proximity Ligation Analysis of protein-protein interactions between RASGRP4 and RAP1A. HeLa cells were stained with anti-RASGRP4 rabbit purified polyclonal 1:1200 and anti-RAP1A mouse monoclonal antibody 1:50. Each red dot represents the detection of protein-protein interaction complex, and nuclei were counterstained with DAPI (blue).



Western Blotting

Image 3. Western Blot detection against Immunogen (45.98 kDa) .