



Datasheet for ABIN519660
anti-RASA1 antibody (AA 948-1047)



[Go to Product page](#)

3 Images

Overview

Quantity:	100 µg
Target:	RASA1
Binding Specificity:	AA 948-1047
Reactivity:	Human
Host:	Mouse
Clonality:	Monoclonal
Conjugate:	This RASA1 antibody is un-conjugated
Application:	Western Blotting (WB), ELISA, Immunofluorescence (IF)

Product Details

Purpose:	Mouse monoclonal antibody raised against a partial recombinant RASA1.
Immunogen:	RASA1 (NP_002881, 948 a.a. ~ 1047 a.a) partial recombinant protein with GST tag. MW of the GST tag alone is 26 KDa.
Sequence:	AKEPYMEGVN PFIKSNKHRM IMFLDELGNV PELPDTTEHS RTDLSRD LAA LHEICVAHSD ELRTLSNERG AQQHVLKLL AITELLQQKQ NQYTKTNDVR
Clone:	1E6
Isotype:	IgG1
Cross-Reactivity:	Human
Characteristics:	Antibody Reactive Against Recombinant Protein.

Target Details

Target:	RASA1
Alternative Name:	RASA1 (RASA1 Products)
Background:	Full Gene Name: RAS p21 protein activator (GTPase activating protein) 1 Synonyms: CM- AVM,CMAVM,DKFZp434N071,GAP,PKWS,RASA,RASGAP,p120GAP,p120RASGAP
Gene ID:	5921
NCBI Accession:	NM_002890
Pathways:	Regulation of Actin Filament Polymerization , Signaling of Hepatocyte Growth Factor Receptor , VEGFR1 Specific Signals

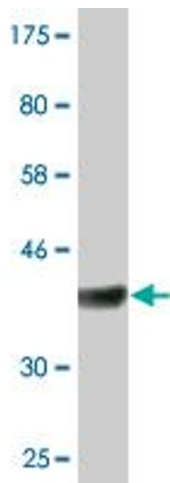
Application Details

Application Notes:	Optimal working dilution should be determined by the investigator.
Restrictions:	For Research Use only

Handling

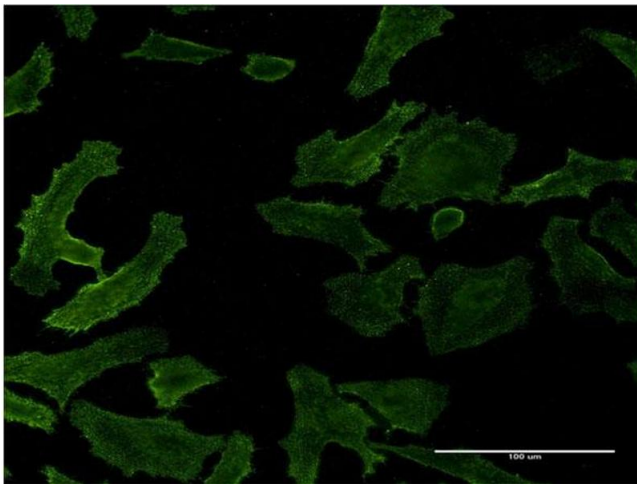
Buffer:	In 1x PBS, pH 7.4
Handling Advice:	Aliquot to avoid repeated freezing and thawing.
Storage:	-20 °C
Storage Comment:	Store at -20°C or lower. Aliquot to avoid repeated freezing and thawing.

Images



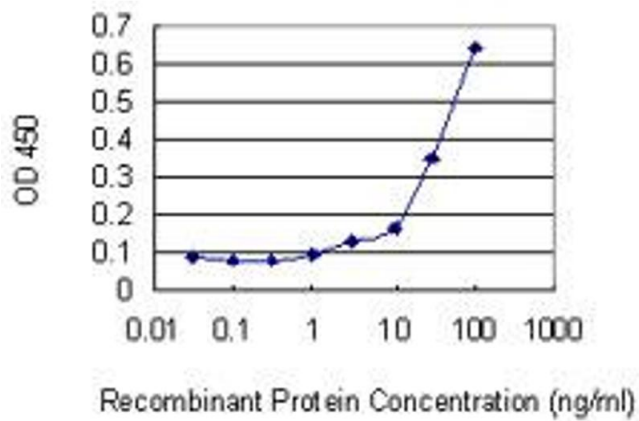
Western Blotting

Image 1. Western Blot detection against Immunogen (36.74 kDa).



Immunofluorescence

Image 2. Immunofluorescence of monoclonal antibody to RASA1 on HeLa cell. [antibody concentration 10 ug/ml]



ELISA

Image 3. Detection limit for recombinant GST tagged RASA1 is 1 ng/ml as a capture antibody.