



Datasheet for ABIN519677
anti-RBMS2 antibody (AA 308-407)



[Go to Product page](#)

4 Images

Overview

Quantity:	100 µg
Target:	RBMS2
Binding Specificity:	AA 308-407
Reactivity:	Human
Host:	Mouse
Clonality:	Monoclonal
Conjugate:	This RBMS2 antibody is un-conjugated
Application:	ELISA, Western Blotting (WB), Immunofluorescence (IF)

Product Details

Purpose:	Mouse monoclonal antibody raised against a partial recombinant RBMS2.
Immunogen:	RBMS2 (NP_002889, 308 a.a. ~ 407 a.a) partial recombinant protein with GST tag. MW of the GST tag alone is 26 KDa.
Sequence:	HHHSYLMQPS GSVLTPGMDH PISLQPASMM GPLTQQLGHL SLSSTGTYP TAAAMQGAYI SQYTPVPSSS VSVEESSGQQ NQVAVDAPSE HGVYSFQFN*
Clone:	4E2
Isotype:	IgG2a
Cross-Reactivity:	Human
Characteristics:	Antibody Reactive Against Recombinant Protein.

Target Details

Target:	RBMS2
Alternative Name:	RBMS2 (RBMS2 Products)
Background:	Full Gene Name: RNA binding motif, single stranded interacting protein 2 Synonyms: FLJ39093,FLJ40023,FLJ43262,SCR3
Gene ID:	5939
NCBI Accession:	NM_002898

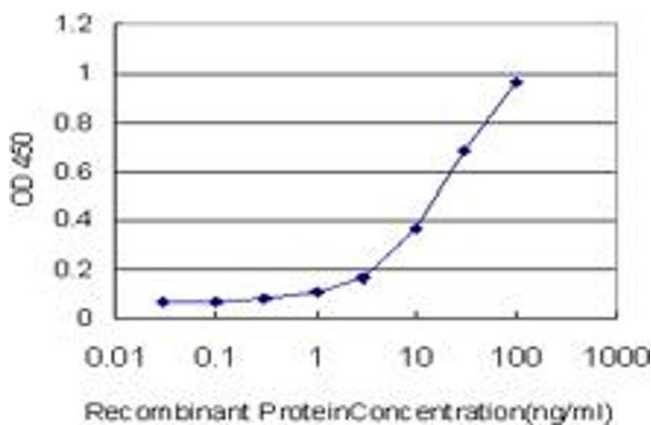
Application Details

Application Notes:	Optimal working dilution should be determined by the investigator.
Restrictions:	For Research Use only

Handling

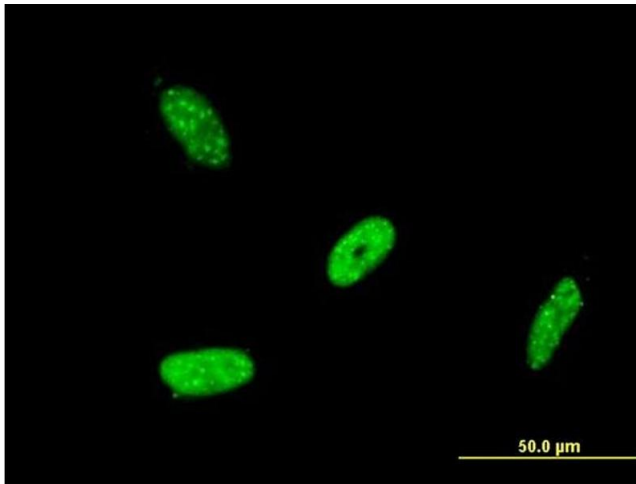
Buffer:	In 1x PBS, pH 7.4
Handling Advice:	Aliquot to avoid repeated freezing and thawing.
Storage:	-20 °C
Storage Comment:	Store at -20°C or lower. Aliquot to avoid repeated freezing and thawing.

Images



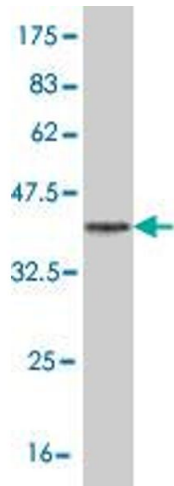
ELISA

Image 1. Detection limit for recombinant GST tagged RBMS2 is approximately 1ng/ml as a capture antibody.



Immunofluorescence

Image 2. Immunofluorescence of monoclonal antibody to RBMS2 on HeLa cell. [antibody concentration 10 ug/ml]



Western Blotting

Image 3. Western Blot detection against Immunogen (37 kDa).

Please check the [product details page](#) for more images. Overall 4 images are available for ABIN519677.