



[Go to Product page](#)

Datasheet for ABIN519691
anti-RCN1 antibody (AA 31-331)

2 Images

Overview

Quantity:	100 µg
Target:	RCN1
Binding Specificity:	AA 31-331
Reactivity:	Human
Host:	Mouse
Clonality:	Monoclonal
Conjugate:	This RCN1 antibody is un-conjugated
Application:	Western Blotting (WB), ELISA

Product Details

Purpose:	Mouse monoclonal antibody raised against a full-length recombinant RCN1.
Immunogen:	RCN1 (AAH10120, 31 a.a. ~ 331 a.a) full-length recombinant protein with GST tag. MW of the GST tag alone is 26 KDa.
Sequence:	PTVRKERVVR PDSSELGERPP EDNQSFQYDH EAFLGKEDSK TFDQLTPDES KERLGKIVDR IDNDGDFVVT TEELKTWIKR VQKRYIFDNV AKVWKDYDRD KDDKISWEEY KQATYGYLLG NPAEFHDSSD HHTFKKMLPR DERRFKAADL NGDLTATREE FTAFLHPEEF EHMKEIVVLE TLEDIDKNGD GFVDQDEYIA DMFSHEENGP EPDWVLSERE QFNEFRDLNK DGKLDKDEIR HWILPQDYDH AQAEARHLVY ESDKNKDEKL TKEEILENWN MFVGSQATNY GEDLTKNHDE L
Clone:	4D9-G3
Isotype:	IgG1
Cross-Reactivity:	Human

Product Details

Characteristics: Antibody Reactive Against Recombinant Protein.

Target Details

Target: RCN1

Alternative Name: RCN1 ([RCN1 Products](#))

Background: Full Gene Name: reticulocalbin 1, EF-hand calcium binding domain
Synonyms: FLJ37041,PIG20,RCAL,RCN

Gene ID: 5954

Application Details

Application Notes: Optimal working dilution should be determined by the investigator.

Restrictions: For Research Use only

Handling

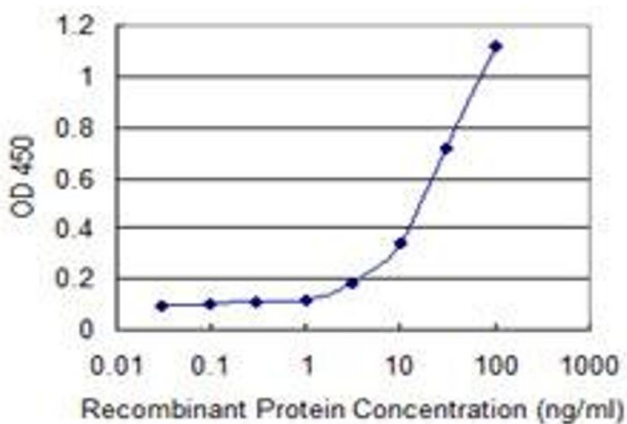
Buffer: In 1x PBS, pH 7.4

Handling Advice: Aliquot to avoid repeated freezing and thawing.

Storage: -20 °C

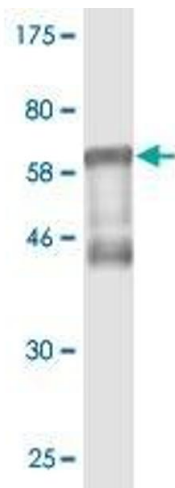
Storage Comment: Store at -20°C or lower. Aliquot to avoid repeated freezing and thawing.

Images



ELISA

Image 1. Detection limit for recombinant GST tagged RCN1 is 1 ng/ml as a capture antibody.



Western Blotting

Image 2. Western Blot detection against Immunogen (58.63 kDa).