

Datasheet for ABIN519730
anti-RELB antibody (AA 1-579)



[Go to Product page](#)

1 Validation

2 Images

Overview

Quantity:	100 µg
Target:	RELB
Binding Specificity:	AA 1-579
Reactivity:	Human
Host:	Rabbit
Clonality:	Polyclonal
Conjugate:	This RELB antibody is un-conjugated
Application:	Western Blotting (WB), Proximity Ligation Assay (PLA)

Product Details

Purpose:	Rabbit polyclonal antibody raised against a full-length human RELB protein.
Immunogen:	RELB (NP_006500.2, 1 a.a. ~ 579 a.a) full-length human protein.
Sequence:	MLRSGPASGP SVPTGRAMPS RRVARPPAAP ELGALGSPDL SLSLAVSRS TDELEIIDEY IKENFGLDG GQPGPEGELP RLVSRGAASL STVTLGPVAP PATPPPWGCP LGRLVSPAPG PGPQPHLVIT EQPKQRGMRF RYECEGRSAG SILGESSTEAS SKTLPAILER DCGGLREVEV TACLWWDWP HRVHPHSLVG KDCTDGICRV RLRPHVSPRH SFNNLGIQCV RKKEIEAAIE RKIQLGIDPY NAGSLKNHQE VDMNVVVICF QASYRDQQGQ MRRMDPVLSE PVYDKKSTNT SELRICRINK ESGPCTGGEE LYLLCDKVQK EDISVFSRA SWEGRADFSQ ADVHRQIAIV FKTPPYEDLE IVEPVTVNVF LQRLTDGVCS EPLPFTYLPR DHDSYGVDKK RKRGMPPDVLG ELNSSDPHGI ESKRRKKKPA ILDFLPHNG SGPFLPPSAL LPDPDFFSGT VSLPGLEPPG GPDLLDDGFA YDPTAPTLFT MLDLLPPAPP HASAVVCSGG AGAVVGETPG PEPLTLDYSQ APGPGDGGTA SLVGSNMFPN HYREAAFEGG LLSPGPEAT

Product Details

Cross-Reactivity:	Human
Characteristics:	Antibody reactive against mammalian transfected lysate.

Target Details

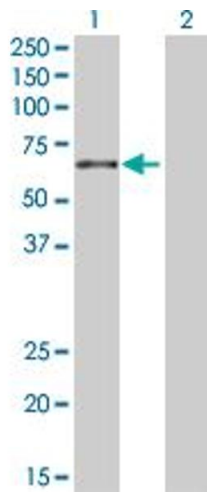
Target:	RELB
Alternative Name:	RELB (RELB Products)
Background:	Full Gene Name: v-rel reticuloendotheliosis viral oncogene homolog B Synonyms: I-REL,IREL
Gene ID:	5971
NCBI Accession:	NM_006509
Pathways:	NF-kappaB Signaling , RTK Signaling

Application Details

Application Notes:	Optimal working dilution should be determined by the investigator.
Restrictions:	For Research Use only

Handling

Buffer:	In 1x PBS, pH 7.4
Handling Advice:	Aliquot to avoid repeated freezing and thawing.
Storage:	-20 °C
Storage Comment:	Store at -20°C or lower. Aliquot to avoid repeated freezing and thawing.

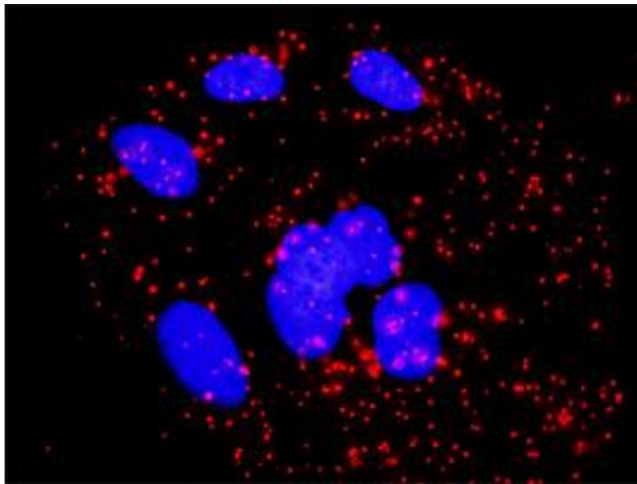


Western Blotting

Image 1. Western Blot analysis of RELB expression in transfected 293T cell line by RELB MaxPab polyclonal antibody.

Lane 1: RELB transfected lysate(62.10 KDa).

Lane 2: Non-transfected lysate.



Proximity Ligation Assay

Image 2. Proximity Ligation Analysis of protein-protein interactions between RELB and RELA. HeLa cells were stained with anti-RELB rabbit purified polyclonal 1:1200 and anti-RELA mouse monoclonal antibody 1:50. Each red dot represents the detection of protein-protein interaction complex, and nuclei were counterstained with DAPI (blue).

Successfully validated (Immunofluorescence (IF))

by [Klinik für Anästhesiologie, Intensivmedizin und Schmerztherapie des Universitätsklinikums Knappschaftskrankenhaus Bochum](#)

Report Number: 104076

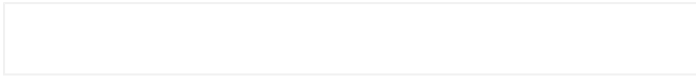
Date: Nov 21 2019

Target:	RELB
Lot Number:	09098
Method validated:	Immunofluorescence (IF)
Positive Control:	U-937 human monocytic cell line
Negative Control:	No primary antibody control
Notes:	Passed. ABIN519730 specifically stains RelB in U-937 human monocytic cells.
Primary Antibody:	ABIN519730
Secondary Antibody:	TRITC-conjugated AffiniPure donkey anti-rabbit IgG antibody (611-025-215, Jackson ImmunoResearch Europe Ltd.)
Protocol:	<ul style="list-style-type: none">• Grow U-937 cells in RPMI 1640 Medium (Gibco, 21875034) supplemented with 10 % FCS (Gibco, A3840001) and Pen/Strep (Gibco, 15140122), at 37°C and 5% CO₂ in 300µL in 24-well plates (Sarstedt AG&Co. KG).• Use cytopsin to spin cells onto slide.• Fix cells on coverslide in 4% paraformaldehyde (Carl Roth GmbH, 0335.1) for 30min at RT.• Wash cells 3x for 5min with PBS (Sigma-Aldrich, 8537).• Permeabilize cells in 100µL PBS containing 0.1 % Triton X-100 (Sigma-Aldrich, T8787) for 5min at RT.• Wash cells 3x for 5min with PBS.• Block non-specific binding with 1x Duolink Blocking solution (Sigma-Aldrich, DUO82007) for 30min at RT.• Incubate cells with primary rabbit anti-human RelB antibody (antibodies-online, ABIN519730, lot 09098 WUIz) diluted 1:100 in 1x Duolink Antibody diluent (Sigma-Aldrich, DUO82008) ON at 4°C.• Wash cells 3x for 5min with PBS.• Incubate cells with secondary TRITC-conjugated AffiniPure donkey anti-rabbit IgG antibody (611-025-215, Jackson ImmunoResearch Europe Ltd.) diluted 1:400 in 1x Duolink Antibody diluent for 1 h at RT in the dark.• Wash cells 2x for 5min with PBS.• Mount coverslips on glass slides in 50µL ProLong Gold antifade mountant with DAPI (Invitrogen, P36931).• Image acquisition with an Olympus widefield microscope.

Validation report #104076 for Immunofluorescence (IF)

Experimental Notes: Strong red staining depending on the presence of primary antibody indicates that the antibody works. Negative control lacking the primary antibody shows only background fluorescence.

Image for Validation report #104076



**Validation image no. 1 for anti-V-Rel Reticuloendotheliosis
Viral Oncogene Homolog B (RELB) (AA 1-579) antibody
(ABIN519730)**

U937 monocytic cells stained with with anti-RelB antibody ABIN519730 and a TRITC-labeled secondary antibody (bottom row, red). Counterstain with DAPI (blue). Negative control without primary antibody (top row) shows no specific TRITC signal.