

Datasheet for ABIN519736

**anti-Ret Proto-Oncogene antibody (AA 361-458)****3** Images[Go to Product page](#)

## Overview

Quantity:	100 µg
Target:	Ret Proto-Oncogene (RET)
Binding Specificity:	AA 361-458
Reactivity:	Human
Host:	Mouse
Clonality:	Monoclonal
Conjugate:	This Ret Proto-Oncogene antibody is un-conjugated
Application:	Western Blotting (WB), ELISA, Proximity Ligation Assay (PLA)

## Product Details

Purpose:	Mouse monoclonal antibody raised against a partial recombinant RET.
Immunogen:	RET (AAH03072, 361 a.a. ~ 458 a.a) partial recombinant protein with GST tag. MW of the GST tag alone is 26 KDa.
Sequence:	NLSISENRTM QLAVLVNDSF FQPGAGVLL LHFNVSVLPV SLHLPSTYSL SVSRRARRFA QIGKVCVENC LADLTGDAVS GRDEARSSGL GSQKHPGS
Clone:	1A5
Isotype:	IgG2a
Cross-Reactivity:	Human
Characteristics:	Antibody Reactive Against Recombinant Protein.

## Target Details

Target:	Ret Proto-Oncogene (RET)
Alternative Name:	RET ( <a href="#">RET Products</a> )
Background:	Full Gene Name: ret proto-oncogene Synonyms: CDHF12,HSCR1,MEN2A,MEN2B,MTC1,PTC,RET-ELE1,RET51
Gene ID:	5979
Pathways:	<a href="#">RTK Signaling</a> , <a href="#">Dopaminergic Neurogenesis</a> , <a href="#">Regulation of Cell Size</a> , <a href="#">Tube Formation</a>

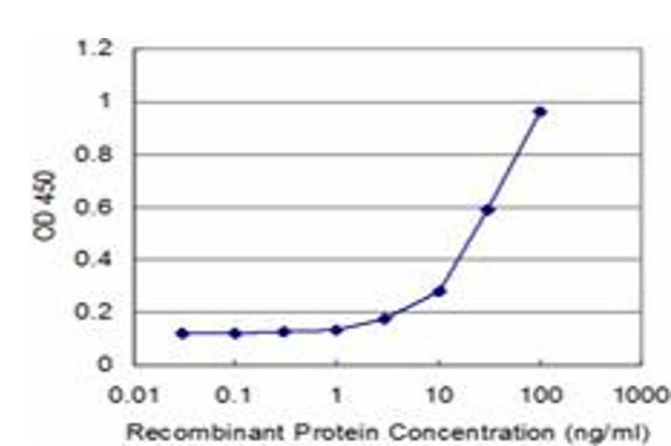
## Application Details

Application Notes:	Optimal working dilution should be determined by the investigator.
Restrictions:	For Research Use only

## Handling

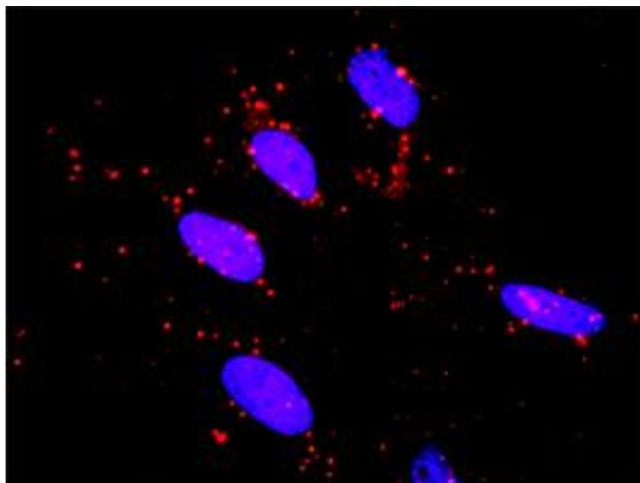
Buffer:	In 1x PBS, pH 7.4
Handling Advice:	Aliquot to avoid repeated freezing and thawing.
Storage:	-20 °C
Storage Comment:	Store at -20°C or lower. Aliquot to avoid repeated freezing and thawing.

## Images



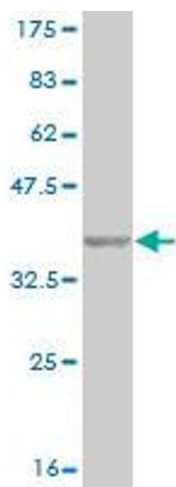
### ELISA

**Image 1.** Detection limit for recombinant GST tagged RET is approximately 3ng/ml as a capture antibody.



### Proximity Ligation Assay

**Image 2.** Proximity Ligation Analysis of protein-protein interactions between MAPK3 and RET. HeLa cells were stained with anti-MAPK3 rabbit purified polyclonal 1:1200 and anti-RET mouse monoclonal antibody 1:50. Each red dot represents the detection of protein-protein interaction complex, and nuclei were counterstained with DAPI (blue).



### Western Blotting

**Image 3.** Western Blot detection against Immunogen (36.52 kDa) .