

Datasheet for ABIN519745  
**anti-RFC3 antibody (AA 257-356)**

## 3 Images

[Go to Product page](#)

## Overview

Quantity:	100 µg
Target:	RFC3
Binding Specificity:	AA 257-356
Reactivity:	Human
Host:	Mouse
Clonality:	Monoclonal
Conjugate:	This RFC3 antibody is un-conjugated
Application:	Western Blotting (WB), ELISA, Immunoprecipitation (IP)

## Product Details

Purpose:	Mouse monoclonal antibody raised against a partial recombinant RFC3.
Immunogen:	RFC3 (AAH00149, 257 a.a. ~ 356 a.a) partial recombinant protein with GST tag. MW of the GST tag alone is 26 KDa.
Sequence:	ETANAIVSQQ TPQRLLEVRG RLYELLTHCI PPEIMKGLL SELLHNCDGQ LKGEVAQMAA YYEHLQLGS KAIYHLEAFV AKFMALYKKF MEDGLEGMMF
Clone:	1C6
Isotype:	IgG2a
Cross-Reactivity:	Human
Characteristics:	Antibody Reactive Against Recombinant Protein.

## Target Details

Target:	RFC3
Alternative Name:	RFC3 ( <a href="#">RFC3 Products</a> )
Background:	Full Gene Name: replication factor C (activator 1) 3, 38 kDa Synonyms: MGC5276,RFC38
Gene ID:	5983
Pathways:	<a href="#">Telomere Maintenance</a> , <a href="#">DNA Damage Repair</a> , <a href="#">DNA Replication</a> , <a href="#">Synthesis of DNA</a>

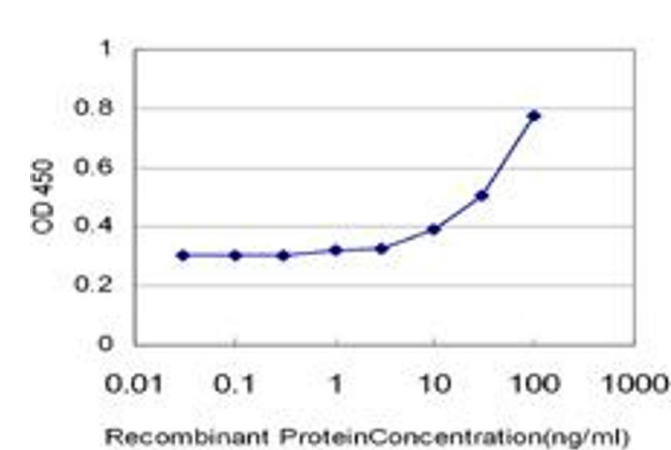
## Application Details

Application Notes:	Optimal working dilution should be determined by the investigator.
Restrictions:	For Research Use only

## Handling

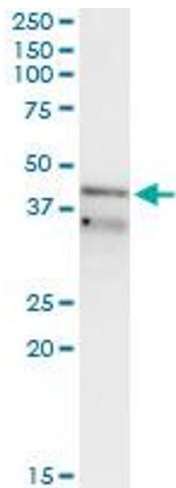
Buffer:	In 1x PBS, pH 7.4
Handling Advice:	Aliquot to avoid repeated freezing and thawing.
Storage:	-20 °C
Storage Comment:	Store at -20°C or lower. Aliquot to avoid repeated freezing and thawing.

## Images



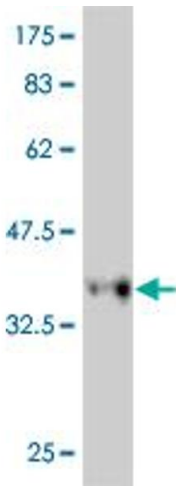
### ELISA

**Image 1.** Detection limit for recombinant GST tagged RFC3 is approximately 10ng/ml as a capture antibody.



Western Blotting

**Image 2.** Immunoprecipitation of RFC3 transfected lysate using anti-RFC3 monoclonal antibody and Protein A Magnetic Bead , and immunoblotted with RFC3 monoclonal antibody.



Western Blotting

**Image 3.** Western Blot detection against Immunogen (36.63 kDa) .