



[Go to Product page](#)

Datasheet for ABIN519768  
**anti-RGS1 antibody (AA 1-196)**

1 Image

### Overview

Quantity:	100 µg
Target:	RGS1
Binding Specificity:	AA 1-196
Reactivity:	Human
Host:	Rabbit
Clonality:	Polyclonal
Conjugate:	This RGS1 antibody is un-conjugated
Application:	Western Blotting (WB)

### Product Details

Purpose:	Rabbit polyclonal antibody raised against a full-length human RGS1 protein.
Immunogen:	RGS1 (AAH15510.1, 1 a.a. ~ 196 a.a) full-length human protein.
Sequence:	MPGMFFSANP KELKGTTHSL LDDKMQRKRRP KTFGMDMKAY LRSMIPHLES GMKSSKSKDV LSAAEVMQWS QSLEKLLANQ TGQNVFGSFL KSEFSEENIE FWLACEDYKK TESDLLPCKA EEIYKAFVHS DAAKQINIDF RTRESTAKKI KAPTPTCFDE AQKVIYTLME KDSYPRFLKS DIYLNLLNDL QANSLK
Cross-Reactivity:	Human
Characteristics:	Antibody reactive against mammalian transfected lysate.

### Target Details

Target:	RGS1
---------	------

## Target Details

Alternative Name:	RGS1 ( <a href="#">RGS1 Products</a> )
Background:	Full Gene Name: regulator of G-protein signaling 1 Synonyms: 1R20,BL34,IER1,IR20
Gene ID:	5996
NCBI Accession:	<a href="#">NM_002922</a>
Pathways:	<a href="#">MAPK Signaling</a> , <a href="#">Myometrial Relaxation and Contraction</a> , <a href="#">Regulation of G-Protein Coupled Receptor Protein Signaling</a> , <a href="#">CXCR4-mediated Signaling Events</a>

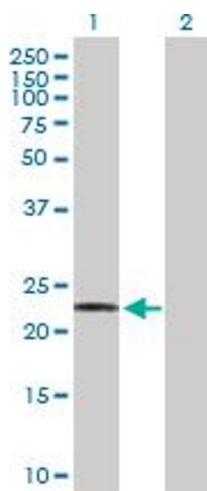
## Application Details

Application Notes:	Optimal working dilution should be determined by the investigator.
Restrictions:	For Research Use only

## Handling

Buffer:	In 1x PBS, pH 7.4
Handling Advice:	Aliquot to avoid repeated freezing and thawing.
Storage:	-20 °C
Storage Comment:	Store at -20°C or lower. Aliquot to avoid repeated freezing and thawing.

## Images



### Western Blotting

**Image 1.** Western Blot analysis of RGS1 expression in transfected 293T cell line by RGS1 MaxPab polyclonal antibody.

Lane 1: RGS1 transfected lysate(22.50 kDa).

Lane 2: Non-transfected lysate.