

Datasheet for ABIN519805
anti-RNASE2 antibody (AA 1-161)[Go to Product page](#)

1 Image

Overview

Quantity:	50 µg
Target:	RNASE2
Binding Specificity:	AA 1-161
Reactivity:	Human
Host:	Mouse
Clonality:	Polyclonal
Conjugate:	This RNASE2 antibody is un-conjugated
Application:	Western Blotting (WB)

Product Details

Purpose:	Mouse polyclonal antibody raised against a full-length human RNASE2 protein.
Immunogen:	RNASE2 (NP_002925.1, 1 a.a. ~ 161 a.a) full-length human protein.
Sequence:	MVPKLFTSQI CLLLLLGLLA VEGSLHVKPP QFTWAQWFET QHINMTSQQC TNAMQVINNY QRRCKNQNTF LLTTFANVVN VCGNPNMTCP SNKTRKNCHH SGSQVPLIHC NLTPSPQNI SNCRYAQTPA NMFYIVACDN RDQRRDPPQY PVVPVHLDRI I
Cross-Reactivity:	Human
Characteristics:	Antibody reactive against mammalian transfected lysate.

Target Details

Target:	RNASE2
---------	--------

Target Details

Alternative Name:	RNASE2 (RNASE2 Products)
Background:	Full Gene Name: ribonuclease, RNase A family, 2 (liver, eosinophil-derived neurotoxin) Synonyms: EDN,RNS2
Gene ID:	6036
NCBI Accession:	NM_002934

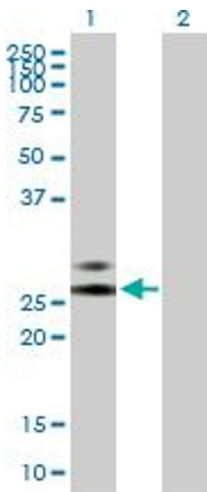
Application Details

Application Notes:	Optimal working dilution should be determined by the investigator.
Restrictions:	For Research Use only

Handling

Buffer:	In 1x PBS, pH 7.4
Handling Advice:	Aliquot to avoid repeated freezing and thawing.
Storage:	-20 °C
Storage Comment:	Store at -20°C or lower. Aliquot to avoid repeated freezing and thawing.

Images



Western Blotting

Image 1. Western Blot analysis of RNASE2 expression in transfected 293T cell line by RNASE2 MaxPab polyclonal antibody.

Lane1:RNASE2 transfected lysate(17.71 KDa).

Lane2:Non-transfected lysate.