



[Go to Product page](#)

Datasheet for ABIN519847  
**anti-RPE antibody (AA 1-228)**

4 Images

Overview

Quantity:	50 µg
Target:	RPE
Binding Specificity:	AA 1-228
Reactivity:	Human
Host:	Mouse
Clonality:	Polyclonal
Conjugate:	This RPE antibody is un-conjugated
Application:	Western Blotting (WB), Immunofluorescence (IF)

Product Details

Purpose:	Mouse polyclonal antibody raised against a full-length human RPE protein.
Immunogen:	RPE (AAH16764, 1 a.a. ~ 228 a.a) full-length human protein.
Sequence:	MASGCKIGPS ILNSDLANLG AECLRMLDSG ADYLHLDVMD GHFVPNITFG HPVVESLRKQ LGQDPFFDMH MMVSKPEQWV KPMAVAGANQ YTFHLEATEN PGALIKDIRE NGMKVGLAIK PGTSVEYLAP WANQIDMALV MTVEPGFGGQ KFMEDMMPKV HWLRTQFPSL DIEVDGGVGP DTVHKCAEAG ANMIVSGSAI MRSEDPRSVI NLLRNVCESEA AQKRSLDR
Cross-Reactivity:	Human
Characteristics:	Antibody reactive against mammalian transfected lysate.

Target Details

Target:	RPE
---------	-----

## Target Details

Alternative Name:	RPE ( <a href="#">RPE Products</a> )
Background:	Full Gene Name: ribulose-5-phosphate-3-epimerase Synonyms: MGC2636,RPE2-1
Gene ID:	6120

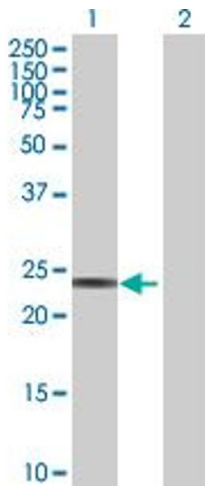
## Application Details

Application Notes:	Optimal working dilution should be determined by the investigator.
Restrictions:	For Research Use only

## Handling

Buffer:	In 1x PBS, pH 7.4
Handling Advice:	Aliquot to avoid repeated freezing and thawing.
Storage:	-20 °C
Storage Comment:	Store at -20°C or lower. Aliquot to avoid repeated freezing and thawing.

## Images

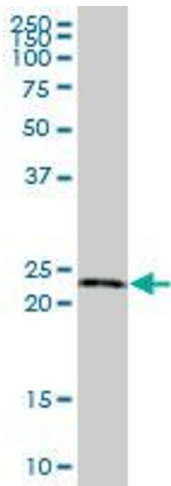


### Western Blotting

**Image 1.** Western Blot analysis of RPE expression in transfected 293T cell line by RPE MaxPab polyclonal antibody.

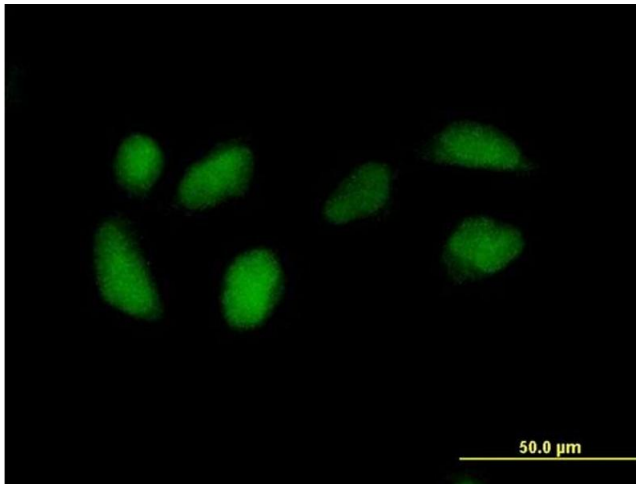
Lane 1: RPE transfected lysate(25.19 kDa).

Lane 2: Non-transfected lysate.



### Western Blotting

**Image 2.** RPE MaxPab polyclonal antibody. Western Blot analysis of RPE expression in human liver.



### Immunofluorescence

**Image 3.** Immunofluorescence of purified MaxPab antibody to RPE on HeLa cell. [antibody concentration 10 ug/ml]

Please check the [product details page](#) for more images. Overall 4 images are available for ABIN519847.