



Datasheet for ABIN519856
anti-RPL15 antibody (AA 1-204)



[Go to Product page](#)

1 Image

Overview

Quantity:	100 µg
Target:	RPL15
Binding Specificity:	AA 1-204
Reactivity:	Human
Host:	Rabbit
Clonality:	Polyclonal
Conjugate:	This RPL15 antibody is un-conjugated
Application:	Western Blotting (WB)

Product Details

Purpose:	Rabbit polyclonal antibody raised against a full-length human RPL15 protein.
Immunogen:	RPL15 (NP_002939.2, 1 a.a. ~ 204 a.a) full-length human protein.
Sequence:	MGAYKYIQEL WRKKQSDVMR FLLRVRCWQY RQLSALHRAP RPTRPKARR LGYKAKQGYV IYRIRVRRGG RKRVPVKGAT YGKPVHHGVN QLKFARSLQS VAEERAGRHC GALRVLNSYW VGEDSTYKFF EVILIDPFHK AIRRNPDTQW ITKPVHKHRE MRGLTSAGRK SRGLGKGHKF HHTIGGSRRRA AWRRRNTLQL HRYR
Cross-Reactivity:	Human
Characteristics:	Antibody reactive against mammalian transfected lysate.

Target Details

Target:	RPL15
---------	-------

Target Details

Alternative Name:	RPL15 (RPL15 Products)
Background:	Full Gene Name: ribosomal protein L15 Synonyms: EC45,FLJ26304,MGC88603,RPL10,RPLY10,RPYL10
Gene ID:	6138
NCBI Accession:	NM_002948

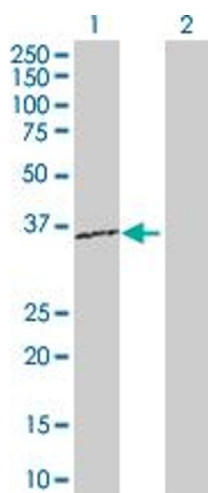
Application Details

Application Notes:	Optimal working dilution should be determined by the investigator.
Restrictions:	For Research Use only

Handling

Buffer:	In 1x PBS, pH 7.4
Handling Advice:	Aliquot to avoid repeated freezing and thawing.
Storage:	-20 °C
Storage Comment:	Store at -20°C or lower. Aliquot to avoid repeated freezing and thawing.

Images



Western Blotting

Image 1. Western Blot analysis of RPL15 expression in transfected 293T cell line by RPL15 MaxPab polyclonal antibody.

Lane 1: RPL15 transfected lysate(24.10 KDa).

Lane 2: Non-transfected lysate.