



[Go to Product page](#)

Datasheet for ABIN519869

anti-RPL32 antibody (AA 33-132)

2 Images

Overview

Quantity:	100 µg
Target:	RPL32
Binding Specificity:	AA 33-132
Reactivity:	Human
Host:	Mouse
Clonality:	Monoclonal
Conjugate:	This RPL32 antibody is un-conjugated
Application:	ELISA, Immunofluorescence (IF)

Product Details

Purpose:	Mouse monoclonal antibody raised against a partial recombinant RPL32.
Immunogen:	RPL32 (NP_000985, 33 a.a. ~ 132 a.a) partial recombinant protein with GST tag. MW of the GST tag alone is 26 KDa.
Sequence:	RNWRKPRGID NRVRRRFKGG ILMPNIGYGS NKKTKHMLPS GFRKFLVHNV KELEVLLMCN KSYCAEIAHN VSSKNRKAIV ERAAQLAIRV TNPNARLRSE
Clone:	1B11
Isotype:	IgG2a
Cross-Reactivity:	Human
Characteristics:	Antibody Reactive Against Recombinant Protein.

Target Details

Target:	RPL32
Alternative Name:	RPL32 (RPL32 Products)
Background:	Full Gene Name: ribosomal protein L32 Synonyms: PP9932
Gene ID:	6161
NCBI Accession:	NM_000994

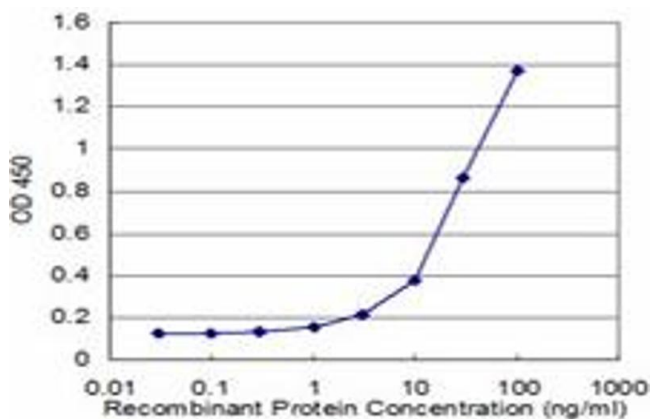
Application Details

Application Notes:	Optimal working dilution should be determined by the investigator.
Restrictions:	For Research Use only

Handling

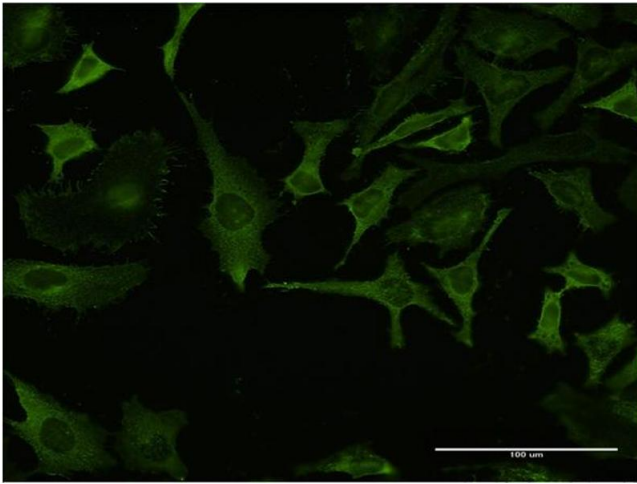
Buffer:	In 1x PBS, pH 7.4
Handling Advice:	Aliquot to avoid repeated freezing and thawing.
Storage:	-20 °C
Storage Comment:	Store at -20°C or lower. Aliquot to avoid repeated freezing and thawing.

Images



ELISA

Image 1. Detection limit for recombinant GST tagged RPL32 is approximately 1ng/ml as a capture antibody.



Immunofluorescence

Image 2. Immunofluorescence of monoclonal antibody to RPL32 on HeLa cell. [antibody concentration 10 ug/ml]