



[Go to Product page](#)

Datasheet for ABIN519907

anti-RPS15 antibody (AA 1-145)

1 Image

Overview

Quantity:	100 µg
Target:	RPS15
Binding Specificity:	AA 1-145
Reactivity:	Human
Host:	Mouse
Clonality:	Monoclonal
Conjugate:	This RPS15 antibody is un-conjugated
Application:	ELISA

Product Details

Purpose:	Mouse monoclonal antibody raised against a full-length recombinant RPS15.
Immunogen:	RPS15 (AAH64908, 1 a.a. ~ 145 a.a) full-length recombinant protein with GST tag. MW of the GST tag alone is 26 KDa.
Sequence:	MAEVEQKKKR TFRKFTYRGV DLDQLLDMSY EQLMQLYSAR QRRRLNRGLR RKQHSLKRL RKAKKEAPPM EKPEVVKTHL RDMIILPEMV GSMVG VYNGK TFNQVEIKPE MIGHYLGFEFS ITYKPVKHGR PGIGATHSSR FIPLK
Clone:	3F8
Isotype:	IgG2a
Cross-Reactivity:	Human
Characteristics:	Antibody Reactive Against Recombinant Protein.

Target Details

Target:	RPS15
Alternative Name:	RPS15 (RPS15 Products)
Background:	Full Gene Name: ribosomal protein S15 Synonyms: MGC111130,RIG
Gene ID:	6209
Pathways:	Ribonucleoprotein Complex Subunit Organization , Ribosome Assembly

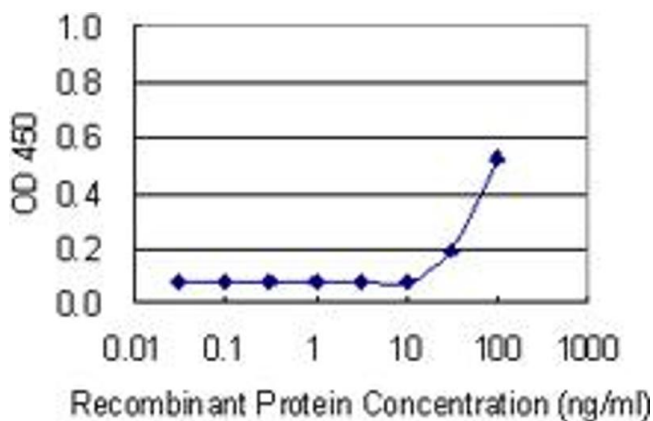
Application Details

Application Notes:	Optimal working dilution should be determined by the investigator.
Restrictions:	For Research Use only

Handling

Buffer:	In 1x PBS, pH 7.4
Handling Advice:	Aliquot to avoid repeated freezing and thawing.
Storage:	-20 °C
Storage Comment:	Store at -20°C or lower. Aliquot to avoid repeated freezing and thawing.

Images



ELISA

Image 1. Detection limit for recombinant GST tagged RPS15 is 10 ng/ml as a capture antibody.