



[Go to Product page](#)

Datasheet for ABIN519910  
**anti-RPS20 antibody (AA 1-119)**

1 Image

Overview

Quantity:	100 µg
Target:	RPS20
Binding Specificity:	AA 1-119
Reactivity:	Human
Host:	Mouse
Clonality:	Monoclonal
Conjugate:	This RPS20 antibody is un-conjugated
Application:	ELISA

Product Details

Purpose:	Mouse monoclonal antibody raised against a full-length recombinant RPS20.
Immunogen:	RPS20 (AAH07507, 1 a.a. ~ 119 a.a) full-length recombinant protein with GST tag. MW of the GST tag alone is 26 KDa.
Sequence:	MAFKDTGKTP VEPEVAIHRI RITLTSRNVK SLEKVCADLI RGAKEKNLKV KGPVRMPTKT LRITTRKTPC GEGSKTWDRF QMRIHKRLID LHSPSEIVKQ ITSISIEPGV EVEVTIADA
Clone:	1G12
Isotype:	IgG2a
Cross-Reactivity:	Human
Characteristics:	Antibody Reactive Against Recombinant Protein.

## Target Details

Target:	RPS20
Alternative Name:	RPS20 ( <a href="#">RPS20 Products</a> )
Background:	Full Gene Name: ribosomal protein S20 Synonyms: FLJ27451,MGC102930
Gene ID:	6224

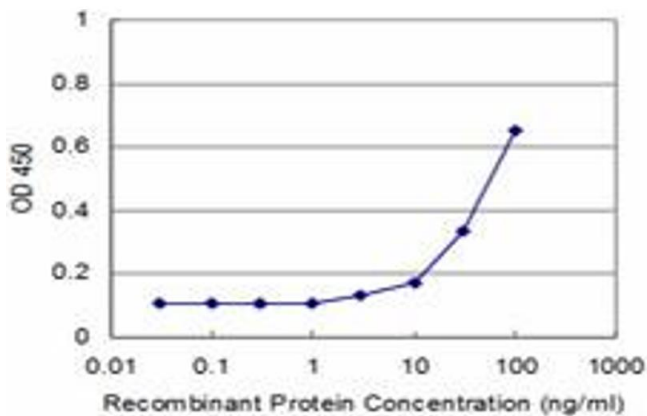
## Application Details

Application Notes:	Optimal working dilution should be determined by the investigator.
Restrictions:	For Research Use only

## Handling

Buffer:	In 1x PBS, pH 7.4
Handling Advice:	Aliquot to avoid repeated freezing and thawing.
Storage:	-20 °C
Storage Comment:	Store at -20°C or lower. Aliquot to avoid repeated freezing and thawing.

## Images



### ELISA

**Image 1.** Detection limit for recombinant GST tagged RPS20 is approximately 3ng/ml as a capture antibody.