



Datasheet for ABIN519919  
**anti-RRM2 antibody (AA 1-389)**



[Go to Product page](#)

3 Images

## Overview

Quantity:	100 µL
Target:	RRM2
Binding Specificity:	AA 1-389
Reactivity:	Human
Host:	Rabbit
Clonality:	Polyclonal
Conjugate:	This RRM2 antibody is un-conjugated
Application:	Western Blotting (WB), Immunoprecipitation (IP)

## Product Details

Purpose:	Rabbit polyclonal antibody raised against a full-length human RRM2 protein.
Immunogen:	RRM2 (NP_001025.1, 1 a.a. ~ 389 a.a) full-length human protein.
Sequence:	<p>MLSLRVPLAP ITDPQQLQLS PLKGLSLVDK ENTPPALSGT RVLASKTARR IFQEPTPEPKT                      KAAAPGVEDE PLLRENPRRF VIFPIEYHDI WQMYKKAEEAS FWTAAEEVDLS KDIQHWESLK                      PEERYFISHV LAFFAASDGI VNENLVERFS QEVQITEARC FYGFQIAMEN IHSEMYSLLI                      DTYIKDPKER EFLFNAIETM PCVKKKADWA LRWIGDKEAT YGERVVAFAA VEGIFFSGSF                      ASIFWLKKRG LMPGLTFSNE LISRDEGLHC DFLCLMFKHL VHKPSEERVR EIIINAVRIE                      QEFLTEALPV KLIGMNCTLM KQYIEFVADR LMLELGFSKV FRVENPFDFM ENISLEGKTN                      FFEKRVGEYQ RMGVMSSPTE NSFTLDADF</p>
Cross-Reactivity:	Human
Characteristics:	Antibody reactive against mammalian transfected lysate.

## Target Details

Target:	RRM2
Alternative Name:	RRM2 ( <a href="#">RRM2 Products</a> )
Background:	Full Gene Name: ribonucleotide reductase M2 polypeptide Synonyms: R2,RR2M
Gene ID:	6241
NCBI Accession:	<a href="#">NM_001034</a>
Pathways:	<a href="#">Mitotic G1-G1/S Phases</a>

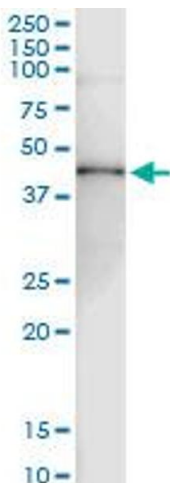
## Application Details

Application Notes:	Optimal working dilution should be determined by the investigator.
Restrictions:	For Research Use only

## Handling

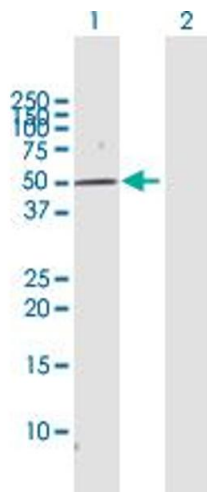
Format:	Liquid
Buffer:	No additive
Preservative:	Without preservative
Handling Advice:	Aliquot to avoid repeated freezing and thawing.
Storage:	-20 °C
Storage Comment:	Store at -20°C or lower. Aliquot to avoid repeated freezing and thawing.

## Images



### Immunoprecipitation

**Image 1.** Immunoprecipitation of RRM2 transfected lysate using anti-RRM2 MaxPab rabbit polyclonal antibody and Protein A Magnetic Bead , and immunoblotted with RRM2 purified MaxPab mouse polyclonal antibody (B01P) .

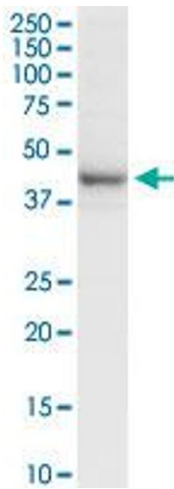


### Western Blotting

**Image 2.** Western Blot analysis of RRM2 expression in transfected 293T cell line by RRM2 MaxPab polyclonal antibody.

Lane 1: RRM2 transfected lysate(44.9 KDa).

Lane 2: Non-transfected lysate.



### Western Blotting

**Image 3.** RRM2 MaxPab rabbit polyclonal antibody. Western Blot analysis of RRM2 expression in human placenta.