



[Go to Product page](#)

Datasheet for ABIN519922  
**anti-RS1 antibody (AA 1-224)**

1 Image

Overview

Quantity:	50 µg
Target:	RS1
Binding Specificity:	AA 1-224
Reactivity:	Human
Host:	Mouse
Clonality:	Polyclonal
Conjugate:	This RS1 antibody is un-conjugated
Application:	Western Blotting (WB)

Product Details

Purpose:	Mouse polyclonal antibody raised against a full-length human RS1 protein.
Immunogen:	RS1 (AAI41639.1, 1 a.a. ~ 224 a.a) full-length human protein.
Sequence:	MSRKIEGFLL LLLFGYEATL GLSSTEDEGE DPWYQKACKC DCQGGPNALW SAGATSLDCI PECPYHKPLG FESGEVTPDQ ITCSNPEQYV GWYSSWTANK ARLNSQGFGC AWLSKFDSS QWLQIDLKEI KVISGILTQG RCDIDEWMTK YSVQYRTDER LNWIYYKDQT GNNRVFYGNS DRTSTVQNLL RPPIISRFIR LIPLGWHVRI AIRMELLECV SKCA
Cross-Reactivity:	Human
Characteristics:	Antibody reactive against mammalian transfected lysate.

Target Details

Target:	RS1
---------	-----

## Target Details

Alternative Name:	RS1 ( <a href="#">RS1 Products</a> )
Background:	Full Gene Name: retinoschisin 1 Synonyms: RS,XLRS1
Gene ID:	6247

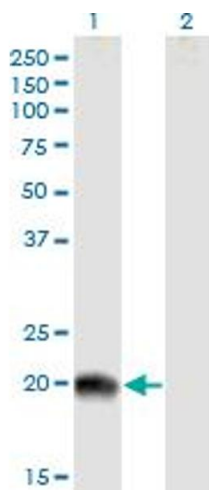
## Application Details

Application Notes:	Optimal working dilution should be determined by the investigator.
Restrictions:	For Research Use only

## Handling

Buffer:	In 1x PBS, pH 7.4
Handling Advice:	Aliquot to avoid repeated freezing and thawing.
Storage:	-20 °C
Storage Comment:	Store at -20°C or lower. Aliquot to avoid repeated freezing and thawing.

## Images



### Western Blotting

**Image 1.** Western Blot analysis of RS1 expression in transfected 293T cell line by RS1 MaxPab polyclonal antibody.

Lane 1: RS1 transfected lysate(24.64 KDa).

Lane 2: Non-transfected lysate.