



[Go to Product page](#)

Datasheet for ABIN519925
anti-RSU1 antibody (AA 178-277)

2 Images

Overview

Quantity:	100 µg
Target:	RSU1
Binding Specificity:	AA 178-277
Reactivity:	Human
Host:	Mouse
Clonality:	Monoclonal
Conjugate:	This RSU1 antibody is un-conjugated
Application:	Western Blotting (WB), ELISA

Product Details

Purpose:	Mouse monoclonal antibody raised against a partial recombinant RSU1.
Immunogen:	RSU1 (NP_036557.1, 178 a.a. ~ 277 a.a) partial recombinant protein with GST tag. MW of the GST tag alone is 26 KDa.
Sequence:	ELTQLKELHI QGNRLTVLPP ELGNLDTGQ KQVFKAENNP WVTPIADQFQ LGVSHVFEYI RSETYKYLYG RHMQANPEPP KKNNDKSKKI SRKPLAAKNR
Clone:	3F10
Isotype:	IgG2a
Cross-Reactivity:	Human
Characteristics:	Antibody Reactive Against Recombinant Protein.

Target Details

Target:	RSU1
Alternative Name:	RSU1 (RSU1 Products)
Background:	Full Gene Name: Ras suppressor protein 1 Synonyms: FLJ31034,RSP-1
Gene ID:	6251
NCBI Accession:	NM_012425

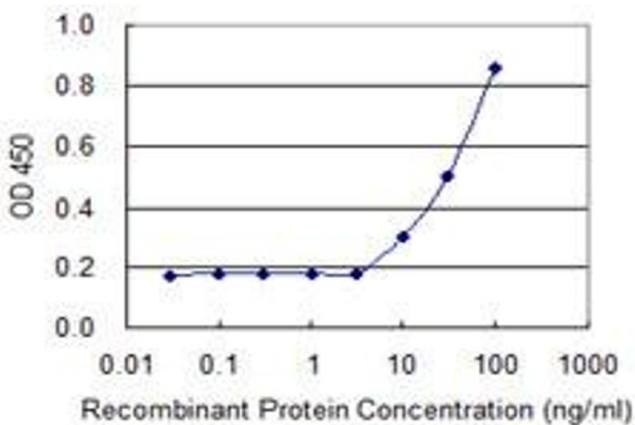
Application Details

Application Notes:	Optimal working dilution should be determined by the investigator.
Restrictions:	For Research Use only

Handling

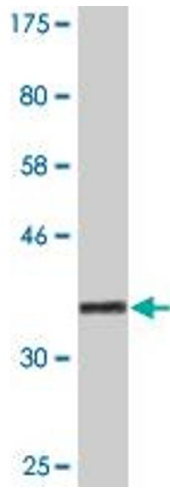
Buffer:	In 1x PBS, pH 7.4
Handling Advice:	Aliquot to avoid repeated freezing and thawing.
Storage:	-20 °C
Storage Comment:	Store at -20°C or lower. Aliquot to avoid repeated freezing and thawing.

Images



ELISA

Image 1. Detection limit for recombinant GST tagged RSU1 is 3 ng/ml as a capture antibody.



Western Blotting

Image 2. Western Blot detection against Immunogen (36.74 kDa).